

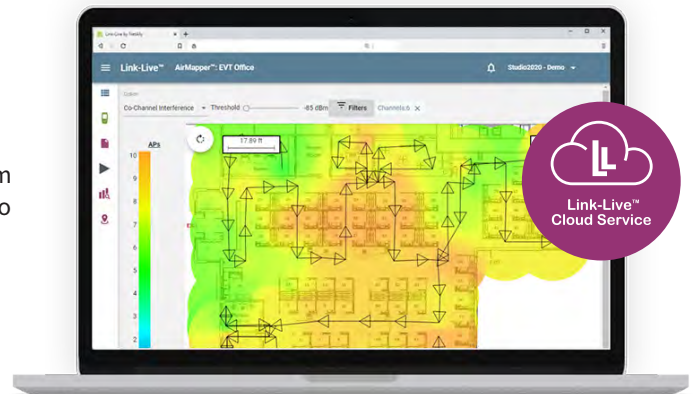
Link-Live™

Complimentary Cloud Service

Unified results, reporting, analysis, network mapping and data management enables collaboration across your entire team.

Key Features

- Enables seamless collaboration between site personnel and remote experts
- Generate Wi-Fi site surveys using the AirMapper™ Site Survey App on EtherScope™ nXG or AirCheck™ G2
- Instantly map your wired and Wi-Fi networks using discovery data from EtherScope nXG or LinkRunner® 10G (with AllyCare support); exports to Visio.
- Reduces results management overhead for multiple testers and users
- Simplifies report generation for network deployment documentation
- For asset management, ability to associate serial numbers of installed devices, and/or cable/wall jack label to specific tests



Overview

Serving as a centralized test results, analysis and tester management system, the free Link-Live Cloud Service transforms team workflows with the ability to quickly and easily log, document, and report test activity from all NetAlly hand-held network testers and analyzers. Once the instrument is connected to the Link-Live Cloud service, your test results, site surveys, and network discovery data are automatically uploaded to the dashboard for project management, analysis, mapping, collaboration and reporting. You have the option of uploading additional files, screenshots, images, profiles, packet captures, location information, and comments anytime. Also, certain NetAlly instruments with AllyCare Support can receive firmware updates “over the network” from Link-Live™ as they become available.

Capabilities

Organize and Filter Results

- Manage several divisions or teams by creating organizations to organize testing result feeds; no licensing costs means you can collaborate with as many team members or clients as needed
- Add labels and folders for grouping related tests and future ease of access
- Prioritize tasks easily by filtering results by level of severity and date
- Filter through results by unit to track tester utility

AutoTest Results Upload and Annotation

AutoTest results can be set to automatically upload to Link-Live ensuring documentation of troubleshooting results. Additional comments and images of the on-site environment can be added to the test result to facilitate better documentation and shorten root cause analysis during troubleshooting escalation.

Data Management

Generate pre-made or custom reports into PDFs, PCAP, CSV, and API to visually share with your team and management network performance trends or issues. Link-Live also includes the capability to upload and store files, such as: documents, photos, screenshots, packet captures, and more.

Network Mapping and Wi-Fi Site Surveying

Instantly map your wired and Wi-Fi networks using discovery data from EtherScope nXG or LinkRunner 10G (with AllyCare support); exports to Visio. Generate Wi-Fi site surveys using the AirMapper Site Survey App on EtherScope nXG or AirCheck G2. Project management feature automatically pushes pre-configured floor plans to tester units. Free collaboration enables sharing with teams or clients with no additional licensing cost.

Capabilities *(continued)*



Device Management

Link-Live acts as a repository for latest firmware for NetAlly Testers that are under AllyCare to download/update.

- Configure and push profiles to testing devices to ensure all test settings are uniform during network testing
- Claim units into different organizations to track device usage and manage role permissions
- Remotely update software for all your units using Link-Live



Cloud Security

- All authentication calls occur via 256-bit AES extended validation SSL encryption
- High-entropy password security using SHA-512 and HMAC hashing algorithms
- Third-party services are used to conduct periodic vulnerability scans of Link-Live



AllyCare Enabled Features

- Essential functions are free to all users for results storage, management, and reporting
- Additional features are only available to customers with AllyCare support on their instrument, such as additional heatmap visualizations in AirMapper and web remote control. For information about AllyCare, go to support.netally.com/allycare/

Models Supported by Link-Live

Model Number/Name	Description
LSPRNTR-300	LinkSprinter® Pocket Network Tester
LRAT-1000	LinkRunner AT 1000 Network AutoTester
LRAT-2000	LinkRunner AT 2000 Network AutoTester
LR-G2	LinkRunner G2 Smart Network Tester
LR10G-100	LinkRunner 10G Advanced Ethernet Tester
AIRCHECK-G2	AirCheck G2 Wi-Fi Tester
EXG-200	EtherScope nXG Portable Network Expert
1TG2-1500	OneTouch AT G2 1500 (discontinued)
1TG2-3000	OneTouch AT G2 3000 (discontinued)
1T10G-1000	OneTouch AT 10Gig (discontinued)

System Requirements

General	
Browser	Latest version of Chrome, Firefox, Safari, Edge, Internet Explorer. For best experience, use Chrome

 netally.com/products/link-live

**Link-Live included with every
NetAlly Handheld Tester!**

