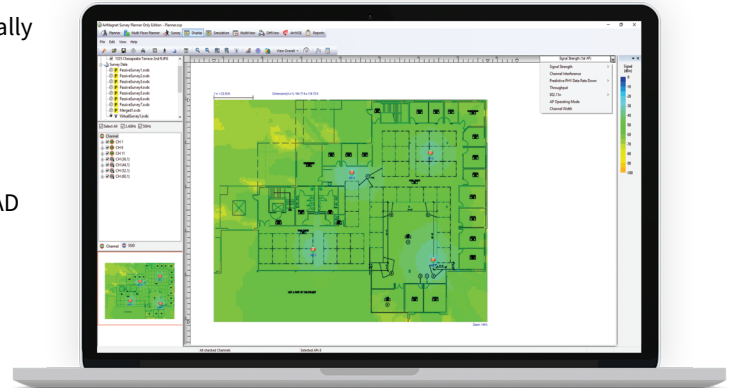


AirMagnet® Planner

Wi-Fi Network Planning Tool

Key Features

- Accurately plan and design Wi-Fi 6/6E networks without physically rolling out any APs
- Optimize AP count and layout for maximized coverage and performance by modeling building construction materials/obstructions and AP placement
- Reduce time spent planning by quickly importing walls from CAD drawings
- Estimate Wi-Fi deployment budgets; generate installer-ready BOM reports
- Plan migration strategies as new users or technologies are introduced



Overview

Haphazard planning of a wireless deployment can lead to overspending, as well as under-served and less-than-thrilled end-users. The AirMagnet Planner is a Wi-Fi network planning tool that enables installers to accurately estimate the quantity, placement and configuration of access points needed to deliver full coverage and device capacity. This saves time, money, and frustration by accounting for building materials, obstructions, access point configurations, antenna patterns, and a host of other variables to provide a predictive map of Wi-Fi signal and performance, before the network or physical building is constructed.

Key Features

- 802.11
Sophisticated WLAN Modeling
 - Build a detailed model of any wireless environment
 - Find ideal AP placement
 - Set AP channel, IP address, transmit power, antenna type, orientation, height, and 802.11 specifications
 - Generate professional bill of materials reports
 - Access performance metrics
- E
Automatic Wall Extraction
 - Reduce the time required to provide environmental details
 - Quickly import walls from CAD drawings
 - Give each CAD layer a unique attenuation type

- Networks
Networks
 - Design new Wi-Fi 6/6E networks
 - Plan migration strategies for legacy networks
 - Offers heatmaps for:
 - Signal coverage
 - MCS index
 - Data rates
 - Channel Width and overlap
 - Operating modes
 - WLAN throughput
 - Predict best design to minimize rework
- Multi-Floor Modeling
Multi-Floor Modeling
 - Plan and design wireless access in multi-floor buildings
 - Gain insights into bleed-over to adjacent floors
 - Visualizations of:
 - Signal strength
 - Data rates
 - Operating mode
 - MCS transmit rate
 - Channel width

Models

Models / Name	Description
AM/A4012G	AirMagnet Planner (Standalone)
AM/A4012G-1YS	1 year AllyCare Support for AirMagnet Planner — AM/A4012G
AM/A4012G-3YS	3 year AllyCare Support for AirMagnet Planner — AM/A4012G
AM/A4018G	AirMagnet Survey PRO (includes Planner)
AM/A4018G-1YS	1 year AllyCare Support for AirMagnet Survey PRO (includes Planner) — AM/A4018G
AM/A4018G-3YS	3 year AllyCare Support for AirMagnet Survey PRO (includes Planner) — AM/A4018G

NOTE: The first year of AllyCare support is required for all AirMagnet products.

System Requirements

Laptop/Notebook PC/Tablet PC

Operating Systems: Microsoft Windows 10 Pro/Enterprise 64-bit, or Microsoft Windows 11 Pro/Enterprise 64-bit.

Intel® Core™ i5 2GHz (Intel® Core™ i7 or higher recommended)

4 GB (8 GB or higher recommended)

800 MB free hard disk space

Site map formats supported by AirMagnet Planner (.bmp, .dib, .dwg, .dxf, .emf, .gif, vsd, .jpg, .wmf, .vdx or .png)

Apple® MacBook® PRO

Operating Systems: MAC OS X v10.5 (Leopard™) or higher running a supported Windows OS (as noted under Laptop/Notebook PC/Tablet PC section) using Boot Camp®

Intel® Core™ i5 2GHz (Intel® Core™ i7 or higher recommended)

4 GB (8 GB or higher recommended)

800 MB free hard disk space

Site map formats supported by AirMagnet Planner (.bmp, .dib, .dwg, .dxf, .emf, .gif, vsd, .jpg, .wmf, .vdx or .png)

©2023 NetAlly. Third-party trademarks mentioned are the property of their respective owners.



netally.com/products/airmagnet-planner