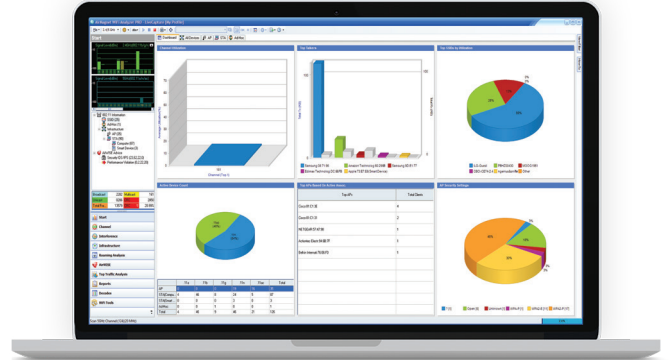


AirMagnet® WiFi Analyzer PRO

Wireless Network Analyzer

Key Features






- Provides details on wireless network connectivity, Wi-Fi coverage, performance, roaming, interference, and network security issues
- Performs testing from the client perspective, independent of network infrastructure, with no access point downtime
- Delivers a complete inventory of devices that are operating in the environment
- Highlights top issues that need immediate attention with a live snapshot into the overall health of the wireless network



Overview

AirMagnet WiFi Analyzer PRO automatically detects and diagnoses dozens of common Wi-Fi network performance problems, security threats and wireless network vulnerabilities, enabling IT staff to quickly solve end-user issues. This advanced tool provides real-time, accurate, independent, and reliable analysis of 802.11a/b/g/n/ac wireless networks. AirMagnet WiFi Analyzer PRO detects throughput issues, Wi-Fi connectivity problems, device conflicts, signal multipath issues and much more – and features a full compliance reporting engine, including wireless PCI, SOX, and ISO.

Key Features

- 
Wi-Fi Traffic
 - Capture traffic for:
 - 802.11a/b/g/n/ac networks
 - Supports up to 3x3 802.11ac
 - Quickly solve Wi-Fi network problems
 - Avoid costly rework or escalations
- 
Wireless Expertise
 - Automatically detects issues across the Wi-Fi spectrum
 - Proactively identifies threats and performance issues
 - Provides access to diagnostic data
 - Offers advice on corrective actions
- 
Portable Troubleshooting
 - Monitor and solve Wi-Fi problems from a clients perspective
 - Full featured, dedicated, on-site troubleshooting
 - Zero AP downtime
- 
Interference
 - Status indicator lists interference for each channel
 - Provides list of hidden nodes and non-Wi-Fi devices
 - Helps improve network performance
- 
Roaming Analysis
 - Supports multiple WLAN adapters
 - Provides advanced details on all roaming transactions
 - Voice over Wi-Fi users can monitor voice delays
 - Provides Voice over Wi-Fi specific data:
 - WiMOS – Latency
 - Signal Strength – Loss
 - Jitter

AirMagnet® WiFi Analyzer PRO

Wireless Network Analyzer

Models & Accessories

Model / Name	Description
AM/A1150G	AirMagnet WiFi Analyzer PRO
AM/A1150G-1YS	1 year AllyCare Support for AirMagnet WiFi Analyzer Pro — AM/A1150G
AM/A1150G-3YS	3 year AllyCare Support for AirMagnet WiFi Analyzer Pro — AM/A1150G
AM/B4070	AirMagnet Spectrum XT (optional)
AM/B4070-1YS	1 year AllyCare Support for AirMagnet Spectrum XT — AM/B4070 (USB based)
AM/B4070-3YS	3 year AllyCare Support for AirMagnet Spectrum XT — AM/B4070 (USB based)
AM/D1090	AirMagnet Multi Adapter kit for WiFi Analyzer (different versions available depending on regulatory domain)

System Requirements

Laptop/Notebook PC/Tablet PC

Application Operating Systems: Microsoft Windows 8.1 Pro/Enterprise 64-bit or Microsoft Windows 10 Pro/Enterprise 64-bit

Intel® Core™ 2 Duo 2.0 GHz (Intel® Core™ i5 or higher recommended)

4 GB memory or higher

800 MB free hard disk space

An ExpressCard slot or USB port, multiple ports in the PC when using multiple adapters. AirMagnet recommends the use of its MULTI-ADAPTER KIT.

AirMagnet-supported wireless network adapter(s)

Optional spectrum adapter and license (required for viewing spectrum data and non-Wi-Fi devices; AirMagnet WiFi Analyzer Pro only). Integration supported with AirMagnet Spectrum XT. Note: AirMagnet Spectrum XT adapter is in the USB form factor

Apple® MacBook® PRO

Operating Systems: MAC OS X v10.9 (or higher) running a supported Windows OS (as noted under Laptop/Notebook PC/Tablet PC section) using Boot Camp®

Intel®-based CPU 2.0 GHz or higher

4 GB memory or higher

800 MB free hard disk space

USB Port, multiple ports when using multiple adapters. AirMagnet recommends the use of its MULTI-ADAPTER KIT.

AirMagnet-supported wireless network adapter(s)

Optional spectrum adapter and license (required for viewing spectrum data and non-Wi-Fi devices; AirMagnet WiFi Analyzer Pro only). Integration supported with AirMagnet Spectrum XT. Note: AirMagnet Spectrum XT adapter is in the USB form factor

©2021 NetAlly. Third-party trademarks mentioned are the property of their respective owners.



netally.com/products/airmagnet-wifi-analyzer



simplicity • visibility • collaboration

AMW-FL-21-V1