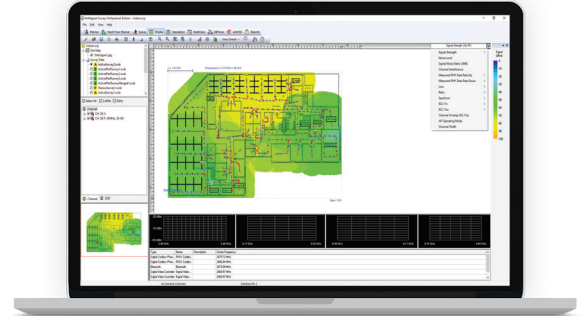


AirMagnet® Survey on Demand

WIRELESS SITE SURVEY SOFTWARE RENTAL

Key Features






- Run multiple independent site survey projects at the same time
- Use your licenses only when you need them
- Cost effectively enable hundreds of surveyors
- Collect real-world data by performing true end-user experience measurements using any Wi-Fi adapter
- Generate heatmaps that provide full visibility of WLAN coverage, interference, throughput, data rates, retries, loss, and more



Overview

AirMagnet Survey on Demand is an economical way to enable network professionals to validate 802.11 wireless LAN networks for optimal performance, security, and compliance on a rental basis. This solution goes beyond simply verifying RF coverage by plotting actual end-user network performance in terms of connection speed, throughput, and packet statistics. Survey on Demand helps you get Wi-Fi installations right the first time, preventing costly rework and user complaints.

Key Features

- 
802.11 Survey
 - Measure and assess end-user experience
 - Shows coverage of specific 802.11 parameters:
 - Modulation and Coding Schemes (MCS)
 - Channel width
 - Operating mode (802.11 a/b/g/n/ac/ax)
 - Complete Wi-Fi heatmap of performance metrics
 - Allows IT staff to design and deploy WLAN accurately
- 
Real-world Data
 - Emulates real-world client behavior
 - Reduces site surveying time
 - Create “what-if” scenarios:
 - Changing AP transmit power
 - Channel
 - Environmental noise
 - Simulate moving, removing, or adding APs
 - Avoid interference and over-allocation
- 
Outdoor
 - Fully-automated outdoor wireless site surveys
 - Leverage GPS device to collect outdoor wireless data
 - Import street maps of any city
 - Export heatmaps into Google Earth™
- 
Enable
 - Perform multiple surveys at the same time
 - A unique license for each surveyor
 - No need to share laptops, tablets, or dongles
 - Perfect for when you only need to perform a few projects a year
 - Remove the need of having to spend exorbitant amounts of money on full survey kits that you don't need
- 
VoWLAN Deployment
 - Built-in voice readiness verification system
 - Validate and plot:
 - Phone call quality
 - Capacity
 - Other voice specific parameters

Models and Accessories

Models	Description
AM/A4015R25	AirMagnet Survey on Demand (25 Units, 7-Day Licenses)
AM/A4015R100	AirMagnet Survey on Demand (100 Units, 7-Day Licenses)
AM/A4015R250	AirMagnet Survey on Demand (250 Units, 7-Day Licenses)
AM/A4015R500	AirMagnet Survey on Demand (500 Units, 7-Day Licenses)
AM/B4070	AirMagnet Spectrum XT (Optional)
AM/B4070-1YS	1 year AllyCare Support for AirMagnet Spectrum XT — AM/B4070 (USB based)
AM/B4070-3YS	3 year AllyCare Support for AirMagnet Spectrum XT — AM/B4070 (USB based)
AM/D1095	AirMagnet Multi-Adapter kit for Survey (different versions available depending on regulatory domain)

System Requirements

Laptop/Notebook PC/Tablet PC

Operating Systems: Microsoft Windows 8 Pro/Enterprise 64-bit, Microsoft Windows 8.1 Pro/Enterprise 64-bit, Microsoft Windows 10 Pro/Enterprise 64-bit, or Microsoft Windows 11 Pro/Enterprise 64-bit.

Intel® Core™ 2 Duo 2.00 GHz (Intel® Core™ i5 or higher recommended)

4 GB RAM or higher

800 MB free hard disk space

An ExpressCard slot or USB port, multiple ports in the PC when using multiple adapters. MULTI-ADAPTER KIT recommended.

Google Earth must be installed in order to export the GPS data for outdoor surveys to Google Earth (Survey PRO only)

For a list of GPS devices that have been approved for use with the AirMagnet Survey product, visit netally.com

Apple® MacBook® PRO

Operating Systems: MAC OS X v10.5 (Leopard™) or higher running a supported Windows OS (as noted under Laptop/Notebook PC/Tablet PC section) using Boot Camp®

Intel®-based CPU 1.6 GHz or higher

4 GB or higher

800 MB free hard disk space

USB Port, multiple ports when using multiple adapters. AirMagnet recommends the use of its MULTI-ADAPTER KIT.

Google Earth must be installed in order to export the GPS data for outdoor surveys to Google Earth (Survey PRO only)

For a list of GPS devices that have been approved for use with the AirMagnet Survey product, visit netally.com

©2022 NetAlly, LLC. Third-party trademarks mentioned are the property of their respective owners.

 netally.com/products/airmagnet-survey-pro