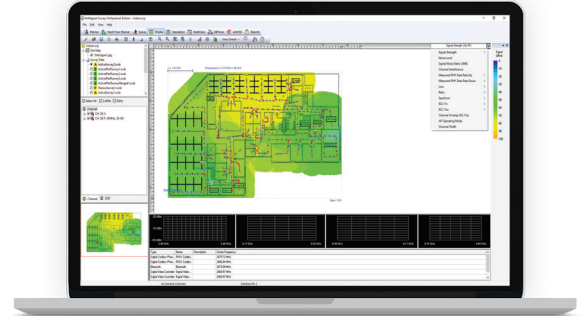


# AirMagnet<sup>®</sup> Survey on Demand

## WIRELESS SITE SURVEY SOFTWARE RENTAL

### Key Features






- Run multiple independent site survey projects at the same time
- Use your licenses only when you need them
- Cost effectively enable hundreds of surveyors
- Collect real-world data by performing true end-user experience measurements using any Wi-Fi adapter
- Generate heatmaps that provide full visibility of WLAN coverage, interference, throughput, data rates, retries, loss, and more



### Overview

AirMagnet Survey on Demand is an economical way to enable network professionals to validate 802.11 wireless LAN networks for optimal performance, security, and compliance on a rental basis. This solution goes beyond simply verifying RF coverage by plotting actual end-user network performance in terms of connection speed, throughput, and packet statistics. Survey on Demand helps you get Wi-Fi installations right the first time, preventing costly rework and user complaints.

### Key Features

- 
**Wi-Fi 6 Site Surveys**
  - Measure and assess end-user experience on the 2.4/5/6GHz bands
  - Shows coverage of specific 802.11 parameters:
    - Modulation and Coding Schemes (MCS)
    - Channel width
    - Operating mode (802.11 a/b/g/n/ac/ax)
  - Complete Wi-Fi heatmap of performance metrics
  - Allows IT staff to design and deploy WLAN accurately
- 
**Real-world Data**
  - Emulates real-world client behavior
  - Reduces site surveying time
  - Create “what-if” scenarios:
    - Changing AP transmit power
    - Channel
    - Environmental noise
  - Simulate moving, removing, or adding APs
  - Avoid interference and over-allocation
- 
**Outdoor**
  - Fully-automated outdoor wireless site surveys
  - Leverage GPS device to collect outdoor wireless data
  - Import street maps of any city
  - Export heatmaps into Google Earth™
- 
**Enable**
  - Perform multiple surveys at the same time
  - A unique license for each surveyor
  - No need to share laptops, tablets, or dongles
  - Perfect for when you only need to perform a few projects a year
  - Remove the need of having to spend exorbitant amounts of money on full survey kits that you don’t need
- 
**VoWLAN Deployment**
  - Built-in voice readiness verification system
  - Validate and plot:
    - Phone call quality
    - Capacity
    - Other voice specific parameters

## Models & Accessories

Models	Description
AM/A4015R25	AirMagnet Survey on Demand (25 Units, 7-Day Licenses)
AM/A4015R100	AirMagnet Survey on Demand (100 Units, 7-Day Licenses)
AM/A4015R250	AirMagnet Survey on Demand (250 Units, 7-Day Licenses)
AM/A4015R500	AirMagnet Survey on Demand (500 Units, 7-Day Licenses)
AM/B4070	AirMagnet Spectrum XT (Optional)
AM/B4070-1YS	1 year AllyCare Support for AirMagnet Spectrum XT — AM/B4070 (USB based)
AM/B4070-3YS	3 year AllyCare Support for AirMagnet Spectrum XT — AM/B4070 (USB based)
AM/D1095	AirMagnet Multi-Adapter kit for Survey (different versions available depending on regulatory domain)

## System Requirements

### Laptop/Notebook PC/Tablet PC

Operating Systems: Microsoft Windows 8 Pro/Enterprise 64-bit, Microsoft Windows 8.1 Pro/Enterprise 64-bit, Microsoft Windows 10 Pro/Enterprise 64-bit, or Microsoft Windows 11 Pro/Enterprise 64-bit.

Intel® Core™ i5 2.00 GHz (Intel® Core™ i7 or higher recommended)

4 GB (8 GB or higher recommended)

800 MB free hard disk space

An ExpressCard slot or USB port, multiple ports in the PC when using multiple adapters. MULTI-ADAPTER KIT recommended.

Google Earth must be installed in order to export the GPS data for outdoor surveys to Google Earth (Survey PRO only)

For a list of GPS devices that have been approved for use with the AirMagnet Survey product, visit [netally.com](http://netally.com)

### Apple® MacBook® PRO

Operating Systems: MAC OS X v10.5 (Leopard™) or higher running a supported Windows OS (as noted under Laptop/Notebook PC/Tablet PC section) using Boot Camp®

Intel® Core™ i5 2GHz (Intel® Core™ i7 or higher recommended)

4 GB (8 GB or higher recommended)

800 MB free hard disk space

USB Port, multiple ports when using multiple adapters. AirMagnet recommends the use of its MULTI-ADAPTER KIT.

Google Earth must be installed in order to export the GPS data for outdoor surveys to Google Earth (Survey PRO only)

For a list of GPS devices that have been approved for use with the AirMagnet Survey product, visit [netally.com](http://netally.com)

\*One year of AllyCare is required

©2022 NetAlly, LLC. Third-party trademarks mentioned are the property of their respective owners.

[netally.com/products/airmagnet-survey-pro](http://netally.com/products/airmagnet-survey-pro)