

# AirMapper™ Site Survey

Wi-Fi and Bluetooth site surveys in the palm of your hand – no laptop, no dongle, and no tethered device.

## Overview

Introducing the **AirMapper Site Survey** app for the AirCheck® G3, EtherScope® nXG, CyberScope®, and CyberScope® Air.

With AirMapper, users of these portable tools can quickly capture location-based Wi-Fi and Bluetooth measurements and generate visual heat maps of key performance metrics directly in Link-Live™ or AirMagnet® Survey PRO.

The AirMapper Site Survey app is the perfect solution for fast, on-the-go surveys—whether you're validating new deployments, checking changes, or verifying overall performance.

- Complete faster and easier Wi-Fi and Bluetooth site surveys with an entirely mobile platform (that also includes in-depth analysis tools).
- Perform enterprise-grade active, passive, or client surveys without the need of a dongle or tethered device.
- Perform noise, SNR, and utilization measurements with an easy-to-use handheld instrument.
- Examine real-world coverage and gain insight into user experience to avoid performance complaints and costly Wi-Fi network re-design—See what the user is experiencing at that moment!
- Automatically identify common Wi-Fi network problems using the InSites intelligence in Link-Live.
- Easily share and visualize survey data through the Link-Live collaboration, reporting, and analysis platform.

The AirMapper app also provides accurate and complete heat maps by measuring Wi-Fi and Bluetooth performance from the perspective of other mobile devices. Users can map RF signal coverage and visualize Wi-Fi and Bluetooth network performance at every location on the floor. The ease and portability of this solution enables technicians to quickly troubleshoot or validate Wi-Fi and Bluetooth networks by measuring the real-world experience of mobile device users.

With Link-Live or AirMagnet Survey PRO creating powerful visualizations of the recorded data, centralized engineers can analyze test results from far-flung remote sites without travel.

Now with  
Wi-Fi 7  
Visibility



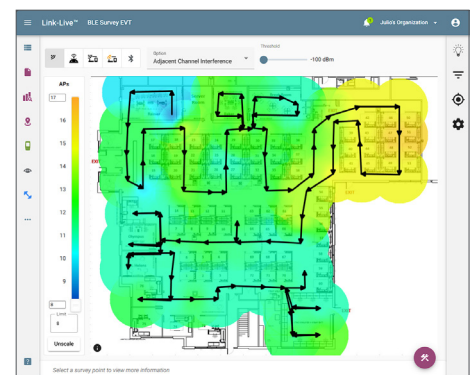
No Laptop



No Dongle







No Tethered Device



Share and visualize survey data through  
Link-Live

## Key Features

-  Measure Signal Coverage, SNR, Utilization, Adjacent and Co-Channel Interference, Tx/Rx Rates and more
-  Identify Wi-Fi Access Point and BLE Beacon Configurations and Properties
-  Validate Wi-Fi and Bluetooth Networks from Mobile Device User Point-of-View
-  Upload and Visualize Survey Results in Link-Live or AirMagnet Survey PRO

## Simplified Project Management and Collaboration

The AirMapper Ecosystem supports the creation and calibration of floorplans in Link-Live. Once created, the floorplan(s) can be automatically sent to any of the AirMapper collectors (AirCheck G3, EtherScope nXG, and CyberScope units) in the user's organization.

## Comprehensive Wi-Fi Surveys

AirMapper supports passive, active, and client surveys. Different from passive surveys, active surveys allow you to perform a site survey while being actively connected to a Wi-Fi network, and are used to validate Wi-Fi network performance and roaming. Meanwhile, client surveys are used to validate IoT device coverage or identify unauthorized end user devices. With their dual radios, AirCheck G3, EtherScope nXG, and CyberScope enable simultaneous passive, active, and client surveys to gather critical site metrics and validate end-user device experience and roaming on a single walk through.

## Bluetooth Site Surveys

Using the AirMapper Site Survey app, users can perform passive Bluetooth and BLE surveys, making it easier to validate coverage when using Bluetooth for "Real Time Location" (RTLS) or identify and locate Bluetooth devices in the area.

EVT BLE Survey 2:33:13 PM 5/7/21 45 Rows														
Address	BSSID	Name	Company Name	Company ID	Beacon Type	TX Power	Edystone NameSpace	Edystone Instance	URL	Bluetooth UUID	Bluetooth MajorID	Bluetooth MinorID	Advertisement Raps	
003216-00028C	-64	EVY4	--	--	Edystone UID	-18	0x020c7656...	0x00000000...	--	--	--	--	General Discoverable	Dr Edit not Support
003216-00028C	-71	EVY4	Apple, Inc.	76	Beacon	-59	--	--	--	426c7656-43...	3838	4949	General Discoverable	Dr Edit not Support
003216-00028C	-64	EVY4	--	--	Unknown	--	--	--	--	--	--	--	General Discoverable	Dr Edit not Support
003216-00028C	-68	EVY4	--	--	Edystone URL	-18	--	--	https://www.bla...	--	--	--	General Discoverable	Dr Edit not Support
003216-000389	-74	EVY3	--	--	Edystone URL	-18	--	--	https://www.bla...	--	--	--	General Discoverable	Dr Edit not Support
003216-000389	-71	EVY3	Apple, Inc.	76	Beacon	-59	--	--	--	426c7656-43...	3838	4949	General Discoverable	Dr Edit not Support
003216-000389	-76	EVY3	--	--	Edystone UID	-18	0x020c7656...	0x00000000...	--	--	--	--	General Discoverable	Dr Edit not Support

Bluetooth and BLE device information

## Automatic Problem Detection

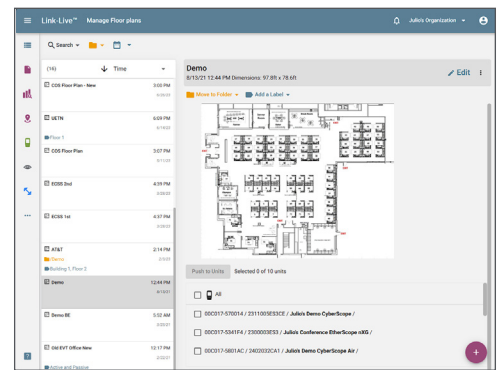
The AirMapper Site Survey app makes it easy for anyone to quickly identify Wi-Fi network problems using the InSites intelligence in Link-Live. InSites simplifies the process of Wi-Fi network troubleshooting by automatically comparing the AirMapper Site Survey data collected on-site to a set of pre-defined thresholds, providing a visual Pass or Fail indication on the heatmap.

## Access Point Location

The AirMapper app simplifies the process of validating new installations or locating rogue devices by automatically triangulating the position of Access Points on a floor plan through the use of Link-Live.

## Ensure Complete Record Keeping

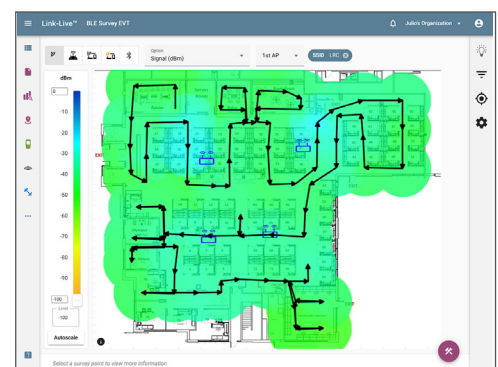
Add Comments on Floor Plan – you can document network issues and changes while performing a site survey. AirMapper allows you to add comments anywhere on the floor plan to record observations or notes, which will be visible on both Link-Live or AirMagnet Survey PRO along with the survey measurements.



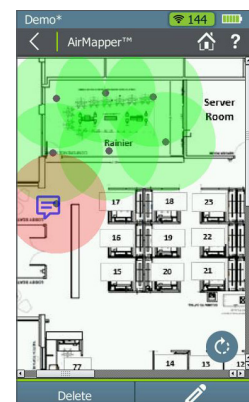
Manage floorplans in Link-Live



Bluetooth and BLE metrics that can be used to identify coverage and configuration problems.



Access point location and automatic problem area identification



Add comments on floor plans

## Comprehensive Visualizations Speed Validation and Troubleshooting

Link-Live and AirMagnet Survey PRO feature a complete set of pre-configured visualizations to help you ensure coverage, connectivity, and performance. Adjusting threshold values indicates areas where measured metrics fail to meet network requirements. The “auto-scale” feature in Link-Live provides more granularity and instant visibility in variations of key Wi-Fi metrics.

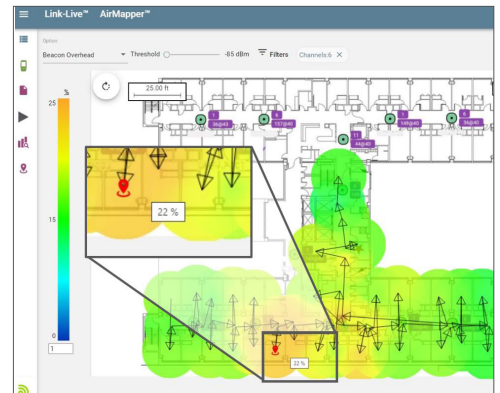
### Pre-configured heatmaps:

- Signal (dBm)
- Noise (dBm), SNR (dB)
- Co-Channel Interference
- Adjacent Channel Interference
- AP Coverage
- Min Basic Rate (Mbps)
- Beacon Overhead
- Max Tx, Max Rx Rates (Mbps)
- Max, Min MCS

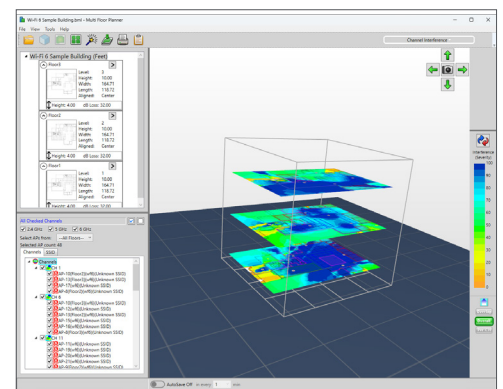
## Simplified Wi-Fi Design Validation

AirMapper allows you to quickly and easily validate Wi-Fi designs created with AirMagnet Survey PRO. Import your AirMapper project into AirMagnet Survey PRO and use the available tool set to compare your design to the data collected with AirMapper.

*\*Active AllyCare Premium Support required for in-depth AirMapper visualizations and filtering, automatic problem identification via InSites™ intelligence, detailed topology map controls, and advanced reporting options in Link-Live.*



*Powerful visualizations for critical Wi-Fi and Bluetooth metrics*



*Validate Wi-Fi Designs created with AirMagnet Survey PRO*

[netally.com/products/airmapper-site-survey](https://netally.com/products/airmapper-site-survey)