

# Link-Live™

## Collaboration, reporting, and analysis platform

Unified results, reporting, analysis, Wi-Fi and Bluetooth site survey, network mapping and data management enables collaboration across your entire team.



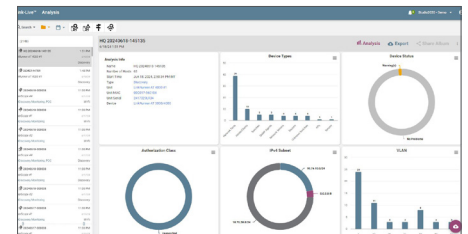
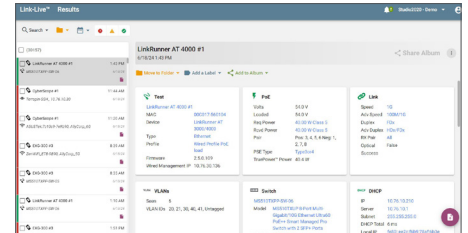
### Key Features

- Available as a free cloud service or Link-Live Private edition for licensed on-premise or private cloud deployment
- Enables seamless collaboration between site personnel and remote experts or with external clients using shareable links
- Generate Wi-Fi and Bluetooth/BLE heatmaps using the AirMapper Site Survey app on the AirCheck® G3, EtherScope® nXG, or CyberScope®
- Reduces results management overhead for multiple testers and users
- Instantly map your wired and Wi-Fi networks using discovery data from AirCheck G3, EtherScope nXG, LinkRunner® AT 4000, LinkRunner® 10G, or CyberScope; speeds troubleshooting, simplifies discovery of unauthorized devices, and keeps documentation up to date; exports to Visio
- Simplifies report generation for network deployment documentation
- For asset management, associate serial numbers of installed devices, and/or cable/wall jack labels to specific tests

### Overview

Serving as a centralized site survey, test results, analysis and tester management system, Link-Live transforms team workflows with the ability to quickly and easily log, document, and report test activity from NetAlly handheld network testers and analyzers. Once the instrument is connected to the Link-Live service, your test results, site surveys, and network discovery data are automatically uploaded to the dashboard for project management, analysis, mapping, collaboration and reporting. You have the option of uploading additional files, screenshots, images, profiles, packet captures, location information, and comments anytime.

*Note: Only NetAlly testers with AllyCare Product support can receive software updates “over the network” from Link-Live as they become available.*



### Key Features

#### AutoTest Results Upload & Annotation

AutoTest results can be set to automatically upload to Link-Live, ensuring documentation of test results. Additional comments and images of the on-site environment can be added to the test result to facilitate better documentation and shorten root cause analysis during troubleshooting or escalation.

#### Organize & Filter Results

- Manage several divisions or teams by creating organizations; no “per seat” licensing costs means you can collaborate with as many team members or clients as needed
- Add labels and folders for grouping related tests & future ease of access
- Prioritize tasks easily by filtering results by level of severity and date
- Filter through results by tester to track tester usage

#### Device Management

- Configure and push profiles to testers in the field to ensure consistent test results
- Claim testers into different organizations to track device usage and manage role permissions
- Remotely update software for all your testers using Link-Live

#### Data Security

- All authentication calls occur via 256-bit AES extended validation SSL encryption
- High-entropy password security using SHA-512 and HMAC hashing algorithms
- Third-party services are used to conduct periodic vulnerability scans

## Network Mapping & Site Surveying

Instantly map your wired and Wi-Fi networks using discovery data from AirCheck G3, EtherScope nXG, LinkRunner AT 4000, LinkRunner 10G or CyberScope; exports to Visio. Generate Wi-Fi and Bluetooth/BLE site surveys using the AirMapper Site Survey App on AirCheck G3, EtherScope nXG, or CyberScope.

## Data Management

Save pre-made or custom reports into PDF, PCAP, and CSV formats, visually share network performance trends or issues with your team. Link-Live also allows you to upload and store files, such as: documents, photos, screenshots, packet captures, and more.

## Link-Live Enabled Features

- Essential functions are free to all users for results storage, management, and reporting
- Additional Link-Live enabled features are only available to customers with AllyCare Product support on their tester or a Link-Live Enabled Features subscription, such as advanced heat map visualizations, advanced topology mapping, and web remote control. For more information on AllyCare visit: [www.netally.com/allycare-support](http://www.netally.com/allycare-support)

## NetAlly Testers Supported by Link-Live

Model	Description	Link-Live Cloud	Link-Live Private
LSPRNTR-300	LinkSprinter Pocket Network Tester	•	n/a
LRAT-3000	LinkRunner AT 3000 Network Cable & Connectivity Tester	•	•
LRAT-4000	LinkRunner AT 4000 Smart Network & Cable Tester	•	•
LR10G-200	LinkRunner 10G Advanced Ethernet Tester	•	•
AIRCHECK-G3-PRO	AirCheck G3 Pro Wireless Tester	•	•
EXG-300	EtherScope nXG Portable Network Expert	•	•
CYBERSCOPE-AIR	CyberScope Wi-Fi Vulnerability Scanner & Tester	•	•
CYBERSCOPE-XRF	CyberScope Ethernet Vulnerability Scanner & Tester	•	•
CYBERSCOPE-CE	CyberScope Edge Network Vulnerability Scanner & Tester	•	•

## Models

Model	Description
LL-PRVT-G*	Link-Live Private Edition, software download
LL-PRVT-SUB*	Link-Live Private Edition, yearly subscription; includes AllyCare Product Support
LINKLIVE-EF-SUB-3YS**	Link-Live Enabled Features, enables in-depth functionality in Link-Live or Link-Live Private; three-year subscription

\*Both items are required for complete installation and use of the Link-Live Private solution.

\*\*Only available for AirCheck G2 and EtherScope nXG (EXG-200 model).

## System Requirements

General	
Browser	Latest version of Chrome, Firefox, Safari, and Edge. For best experience, use Chrome.

## Server Requirements *(Link-Live Private only)*

Hardware	Minimum Requirements	Recommended
Disk Space	150GB	300GB
Memory	12GB	24GB
Processor	4 Cores @ 1.4GHz	8 Cores @2.0GHz or faster
Software	Technology	Minimum Version
Linux	Ubuntu	20.04
Docker	Client/Server	20.10.2
Docker	Compose	1.25.0