

The Business Value of NetAlly Solutions



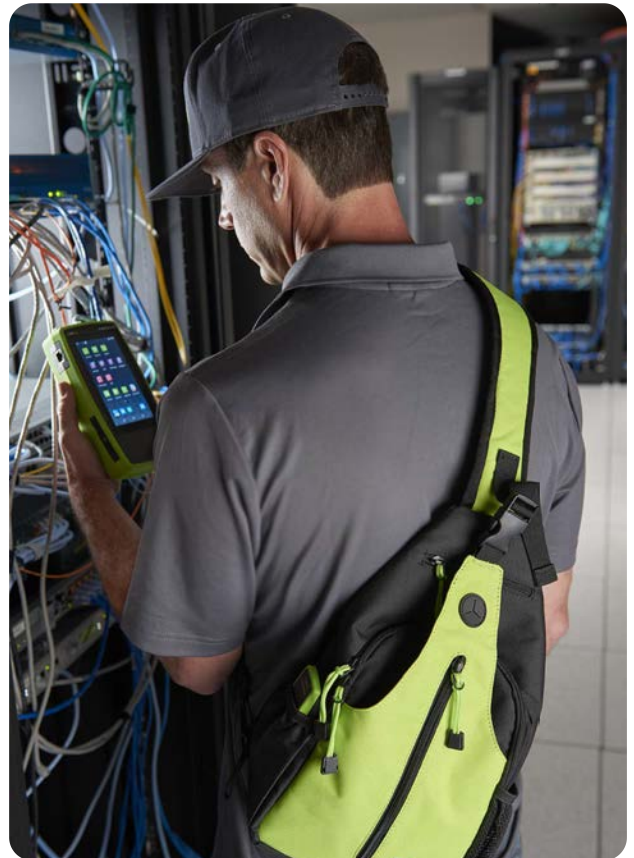
OVERVIEW

NetAlly provides intuitive and cost-effective network testing, troubleshooting and security tools that empower IT teams to maintain resilient, high-performing networks.

From frontline technicians to senior engineers, NetAlly addresses pressing operational challenges, workforce constraints, budget pressures and the imperative for faster project execution by streamlining network visibility and problem diagnosis.

ALIGNING WITH IT LEADERSHIP PRIORITIES

- DELIVERING GREAT CUSTOMER EXPERIENCE**
 NetAlly's real-time analytics and instant network visibility help avoid service disruptions, enabling a consistent, high-quality user experience.
- DRIVING INNOVATION & OPERATIONAL EFFICIENCY**
 CIOs can leverage NetAlly tools to free skilled staff from repetitive tasks and shorten resolution times, maximizing productivity and ensuring resources are channeled into strategic projects.
- MODERNIZING APPLICATIONS & INFRASTRUCTURE**
 Comprehensive visibility across distributed environments supports secure, scalable modernization. NetAlly's solutions reveal bottlenecks, reduce downtime, and help future-proof networks.



KEY BENEFITS



Improved user experience

77%



Time saved resolving network issues, up to

60%



Reduction in problem escalations

30%



Reduced or eliminated outsourcing

96%

NetAlly ultimately transforms network operations into a strategic advantage, **reducing costs, optimizing staff efficiency,** and **ensuring reliable performance** that drives customer satisfaction and business growth.

ADDRESSING THE TOP NETWORK CHALLENGES

WORKFORCE ISSUES - SKILL SET & CAPACITY

- Automated, user-friendly interfaces enable even less experienced technicians to resolve complex problems, reducing reliance on senior experts.
- Remote-access features let skilled engineers assist on-site personnel without traveling, saving time and budget.

BUDGET PRESSURES - DOING MORE WITH LESS

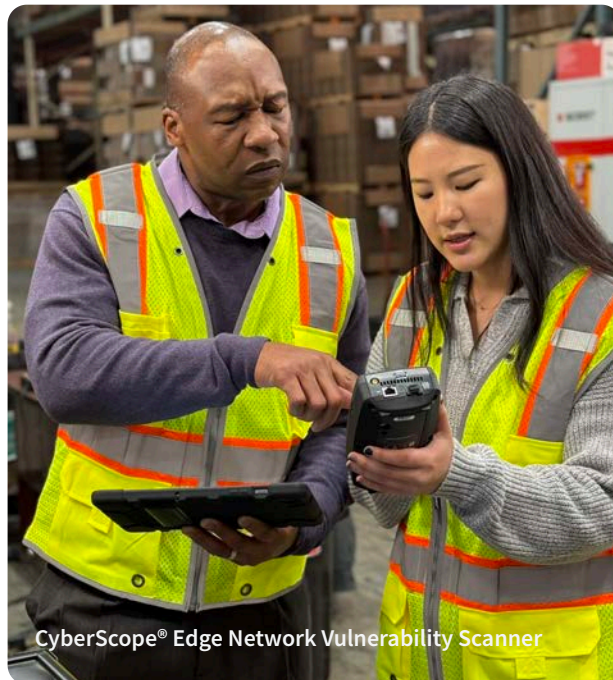
- Cost-effective, high-impact tools reduce both outsourcing and the need to upgrade infrastructure elements by optimizing current assets.
- Upfront investment pays for itself quickly via decreased downtime, faster problem resolution, and fewer escalations.

FASTER PROJECT EXECUTION

- Rapid diagnostics keep projects on track by minimizing network-related holdups.
- Edge visibility and instant diagnostics allow safe, timely deployments in ever-expanding digital environments.

SECURING THE NETWORK EDGE

- NetAlly's CyberScope® instrument brings vulnerability assessments and compliance checks to the edge, seeing potential attack vectors in real time.
- Discover, validate, and assess edge network endpoints (IT/IoT) in distributed architectures.



TRUSTED BY CUSTOMERS LIKE ...



amazon.com



cisco



verizon

Google



Walmart



3M



Capital One



Toll-Free 1-844-878-2259 • 1-719-755-0770
sales@netally.com • netally.com

©2025 NetAlly, LLC BV-FL-25-V1