

# AirMagnet Planner 10.4.0

# Release Notes

November 2021

---

## Table of Contents

▪ Introduction .....	1
▪ Special Notes .....	1
▪ New Features in v10.4.0 .....	3
▪ Bug Fixes .....	6
▪ Known Issues .....	6
▪ System Requirements .....	7
▪ Supported Site Map Image Formats.....	7
▪ Release History.....	7
▪ Technical Support .....	7

---

## Introduction

AirMagnet Planner enables you to accurately plan and design 802.11a/b/g/n/ac/ax wireless networks without physically rolling out any Access Point (AP). AirMagnet Planner accounts for building materials, obstructions, access point configurations, antenna patterns and many other variables to provide a reliable predictive map of Wi-Fi signal and performance. The solution offers superior predictive modeling to determine ideal quantity, placement, and configuration of APs for optimal security, performance, and compliance. This *Release Notes* highlight issues addressed in the 10.4.0 release in addition to the new features. It also provides basic instructions and important notes regarding the installation and operation of the software.

---

## Special Notes

- You must uninstall any previous version of AirMagnet Planner using the Control Panel before installing the released version of AirMagnet Planner 10.4.0. Do not use the 'Repair' function. Using Repair has resulted in unreliable performance in some versions of Windows.
  - Note when installing on Windows 8, 8.1, 10, or 11, it is highly recommended to install all available Microsoft updates before installing and running AirMagnet Planner.
  - AirMagnet Planner 8.8 and later releases use the *.svdx* file extension for survey data files, which is different from the *.svd* file extension used in all previous releases. **It is important to note that you cannot open .svdx files in any previous version of AirMagnet Planner. If you have done a plan using AirMagnet Planner 8.8 or later, you MUST open the survey data (.svdx) file in AirMagnet Planner 8.8 or later.** You can still open or import Planner projects and data files saved in *.svd* format from earlier versions of the application. However, when you open an *.svd* file for the first time in AirMagnet Planner 8.8 or later, the application will first convert the file to the new *.svdx* file format.
-

The conversion may take longer than just opening a file. You can view the progress of the conversion from the progress bar at the bottom of the screen.

- You must have a Cisco “Plus” license to use the Cisco Prime Infrastructure feature.

## New Features in v10.4.0

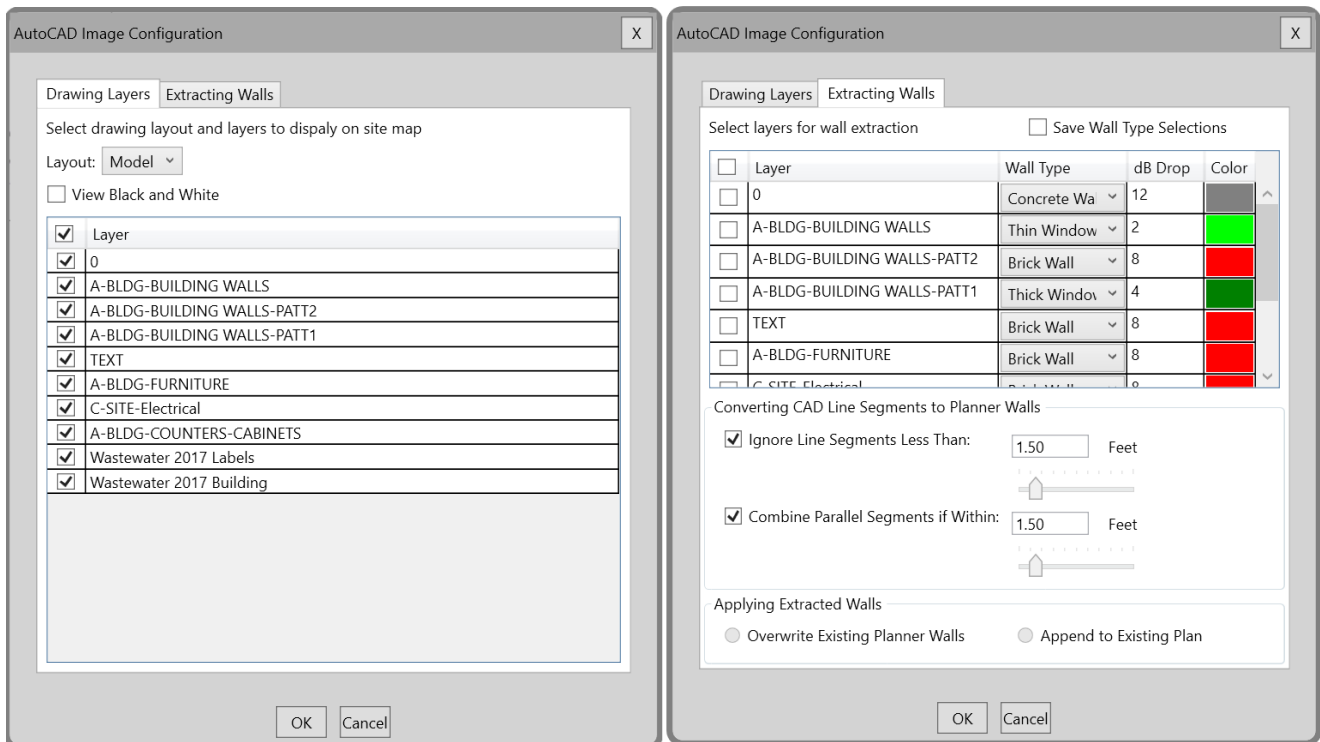
- Automatic Wall Extraction on the Multi-Floor Planner .....3
- Export to CAD on Multi-Floor Planner.....4
- Microsoft Windows 11 Pro 64-bit Support .....4
- End of Support for Legacy Planner Tool .....4
- New Antenna Patterns .....5

### Automatic Wall Extraction on the Multi-Floor Planner

This release simplifies Wi-Fi network design on multi-floor environments by providing the ability to use the “Automatic Wall Extraction” (AWE) tool on the Multi-Floor Planner. No need to spend time manually drawing walls anymore!

To use the “Automatic Wall Extraction” tool on the Multi-Floor Planner, go to “Tools” and select the “Configure CAD Floor Plan” option. From here you will be given two options:

- Drawing Layers – Allows you to select which CAD layers you want to show on the floor plan. It also provides the option to convert the floor plan image to “Black and White” only, making it easier to visualize walls after they have been added on top of the image.
- Extracting Walls – Allows you to select the CAD layers for which you want to extract walls, and then assign a “Wall Type”. It also provides options to ignore or combine CAD line segments. Options to “Overwrite Existing Planner Walls” or “Append to Existing Plan” are also provided.



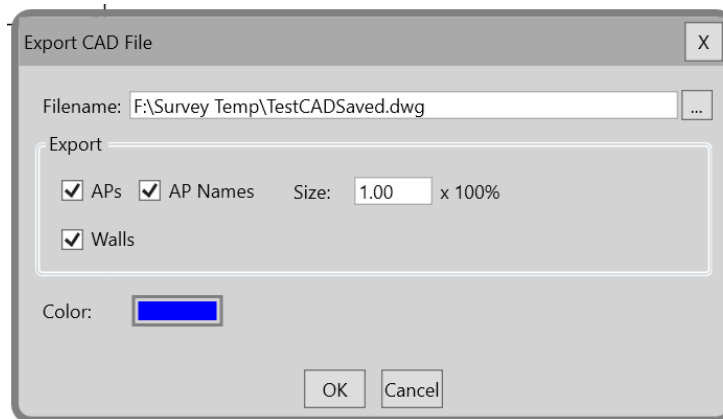
Please keep the following in mind while using this new functionality:

- The “Configure CAD Floor Plan” option is only available while using a CAD drawing (.DWG, .DWF, .DXF).
- The “Configure CAD Floor Plan” option is only available while on the “View 2D” mode.
- To save the “Wall Type” selections made under the “Extracting Walls” section, enable the “Save Wall Type Selections” option.

## Export to CAD on Multi-Floor Planner

The Multi-Floor Planner tool will now allow you to export your design directly to a .DWG. Making it easier to share your design with team members or customers and making it easier to import your design into other applications.

To access the new export option, go to “File” and select the “Export to CAD” option. From here, select where to save the new .DWG file and then select if you want to include AP’s, AP Names, and Walls on the file. You will also be given the option to change the size of the AP’s and AP Names before exporting the design.



## Microsoft Windows 11 Pro 64-bit Support

The AirMagnet team is happy to announce official support for the latest version of the Microsoft Windows operating system. Starting with this release you will be able to use AirMagnet Planner on any personal computer with Microsoft Windows 11 Pro 64-bit.

Please note that Microsoft Windows 11 Home edition is not supported.

## End of Support for Legacy Planner Tool

After years of great service, starting on November 16<sup>th</sup>, 2021, the AirMagnet team will end support for the legacy single floor Planner tool. We recommend migrating all legacy Planner projects to the Multi-Floor Planner. The legacy Planner tool will be removed from the software in a future release.

## New Antenna Patterns

This Survey PRO 10.4.0 release adds the following antenna patterns.

Vendor	Antenna Pattern
<b>Aruba</b>	AP-365 AP-367 AP-500 AP-570
<b>Cambium</b>	XV2-2T0
<b>Extreme</b>	AP305C AP4000
<b>Fortinet</b>	FAP-221E FAP-223E FAP-C24JE FAP-23JF FAP-231F FAP-234F FAP-431F FAP-432F FAP-433F FAP-831F FAP-U231F FAP-U431F FAP-U433F FAP-U221EV FAP-U223EV FAP-U321EV FAP-U323EV FAP-U421EV FAP-U423EV FAP-U422EV FAP-U24JEV
<b>Meraki</b>	MR70
<b>Ruckus</b>	H550 R550 R850 T350C T350D T750 T750SE
<b>Ubiquiti</b>	UAP-HD UAP-SHD UAP-AC-Lite UAP-AC-LR UAP-AC-IW

	UAP-AC-IW-PRO UAP-AC-PRO UAP-IW-HD UAP-AC-M UAP-AC-M-PRO UMA-D UAP-nanoHD UAP-XG UWB-XG UDM UAP-FlexHD UAP-BeaconHD U6 Lite U6 LR U6 Pro
--	------------------------------------------------------------------------------------------------------------------------------------------------------------------------------------

## Bug Fixes

This section covers the defects that have been fixed in this release.

### Planner 10.4.0 Release

Defect ID	Description
178758677	Cisco AP-1562d pattern definition issues.
178789881	Fix for Cambium CnPilot e700.

## Known Issues

This section documents the major known issues with this AirMagnet Planner 10.4.0 release.

Defect ID	Description
176064752	Multi-Floor Planner: Unable to move an AP that is in a defined coverage area.

---

## System Requirements

### Laptop and Tablet PC

- Operating Systems: Microsoft Windows 8 Pro/Enterprise 64-bit, Microsoft Windows 8.1 Pro/Enterprise 64-bit, Microsoft Windows 10 Pro/Enterprise 64-bit, or Microsoft Windows 11 Pro/Enterprise 64-bit.
- Intel® Core™ 2 Duo 2.00 GHz (Intel® Core™ i5 or higher recommended).
- 4 GB memory or higher.
- 800 MB free HDD or SSD space.

### Apple® MacBook® Pro

- Operating Systems: MAC OS X v10.9 or higher running a supported Windows OS (as noted under the Laptop and Tablet PC section) using Boot Camp®.
- Intel®-based CPU 2.0 GHz or higher.
- 4 GB memory or higher.
- 800 MB free HDD or SSD space.

---

## Supported Site Map Image Formats

.bmp, .dib, .dwf, .dwg, dxf, .emf, .gif, vsd, .jpg, .wmf, .vdx, and .png.

---

## Release History

Release Month	Release Version
07/2020	AirMagnet Planner 10.0.0
12/2020	AirMagnet Planner 10.1.0
01/2021	AirMagnet Planner 10.2.0
05/2021	AirMagnet Planner 10.3.0
07/2021	AirMagnet Planner 10.3.1
11/2021	AirMagnet Planner 10.4.0

---

## Technical Support

If you need help for this AirMagnet Planner 10.4.0 release, contact NetAlly, as follows:

Contact Venue	Description
<b>Web:</b>	<a href="https://www.netally.com/support/technical-support/">https://www.netally.com/support/technical-support/</a>
<b>Phone:</b>	1-844-878-2559 or 1-719-755-0770 and select Option 2

**Note:** International direct dial phone numbers are available at <https://www.netally.com/contact-us/>.