

AirMagnet Planner 11.2.0

Release Notes

November 2023

Introduction

AirMagnet Planner enables you to accurately plan and design 802.11 a/b/g/n/ac/ax wireless networks on the 2.4GHz, 5GHz, and 6GHz bands without physically rolling out any Access Point (AP). AirMagnet Planner accounts for building materials, obstructions, access point configurations, antenna patterns and many other variables to provide a reliable predictive map of Wi-Fi signal and performance. The solution offers superior predictive modeling to determine ideal quantity, placement, and configuration of APs for optimal security, performance, and compliance.

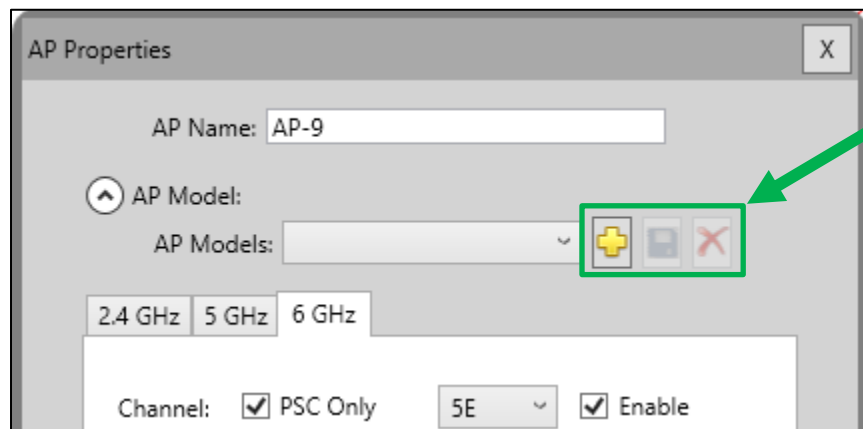
This *Release Notes* highlight issues addressed in the 11.2.0 release in addition to the new features.

New Features in v11.2.0

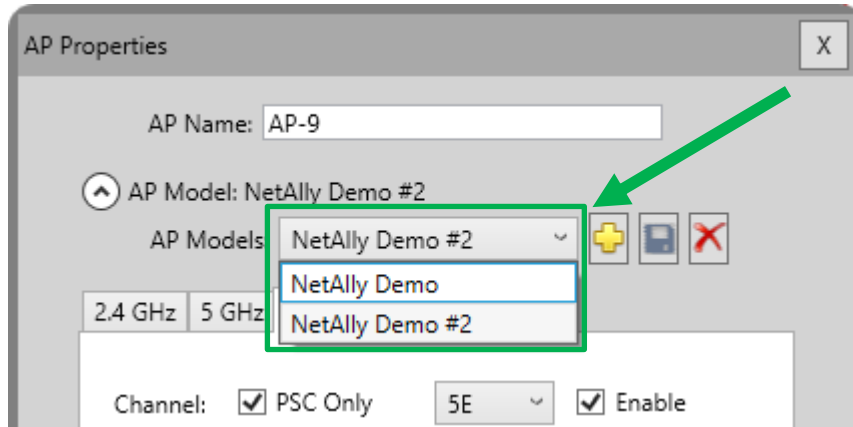
AP Model Templates in the Multi-Floor Planner

You will now be able to create AP model templates while designing or planning a Wi-Fi network in the Multi-Floor Planner! AP model templates allow you to save your preferred AP configuration and reuse it on other projects, thus making it faster to plan or design a network. Some of the new functionality now available includes:

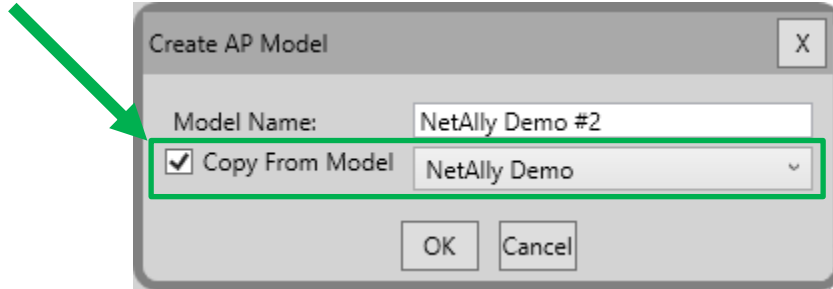
- Option to create, modify, or delete AP model templates from the “AP Properties” window.



- Option to select an existing AP model template and reuse it from the “AP Properties” window.



- Option to use an existing AP model template as a base to create new templates.



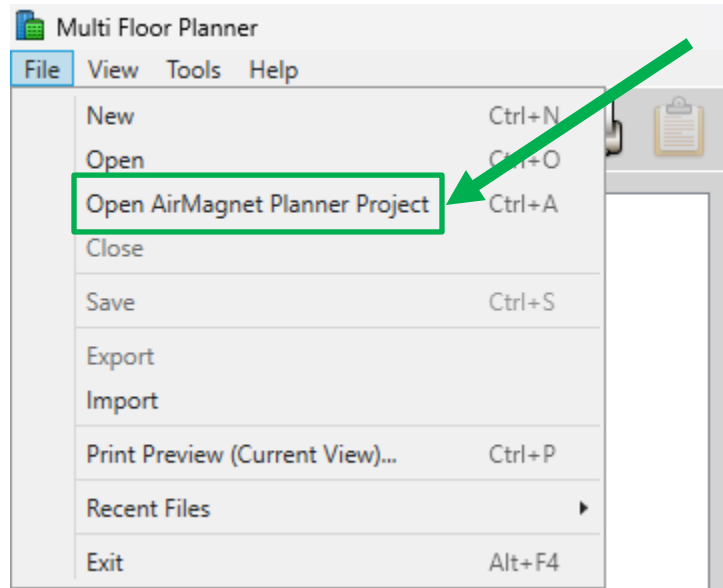
Please keep the following in mind while using this new functionality:

- The option to import AP model templates created with the Legacy Single Floor Planner into the Multi-Floor Planner is not currently available.

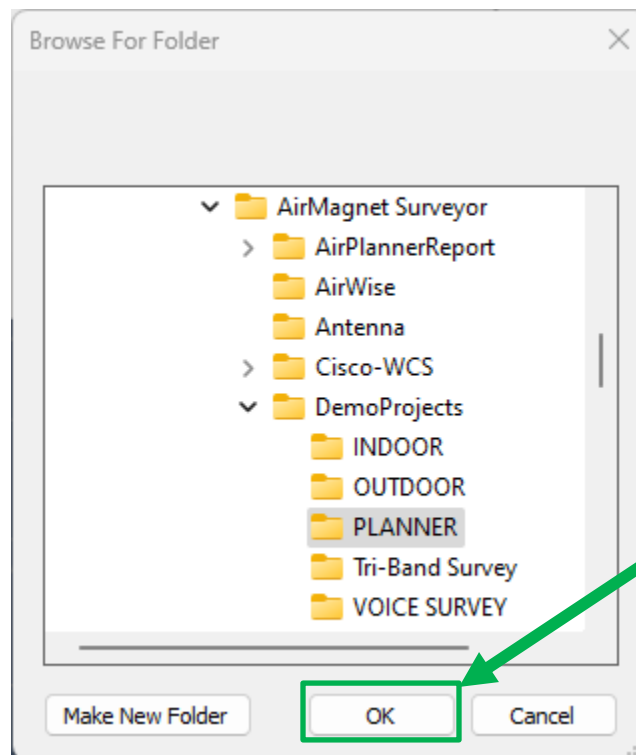
Automated Import of Legacy Planner Projects in the Multi-Floor Planner

Importing existing Legacy Single Floor Planner projects into the Multi-Floor Planner is now a lot easier than before. Instead of having to create a new Multi-Floor Planner project and then manually import a Legacy Single Floor Planner project into a floor, you will now have the option of automatically converting Legacy Single Floor Planner projects into a Multi-Floor Planner project. Here is how it works!

- From the Multi-Floor Planner, select the “File” option and then select the “Open AirMagnet Planner Project” option.



- Browse to the folder that contains the Legacy Single Floor Planner project you want to import and click on the “OK” button.



- While on the “New Building” window, enter the “Building Name” and other required information.
- If you have multiple Legacy Single Floor Planner files (.spi) under the same project, select to which floor you want to assign each file.

Building Name: NetAlly Demo

Building Folder: C:\Users\JulioPetrovitch\Documents\NetAlly Demo

Building Contact: NetAlly

Unit of Measurement: Feet

Number of Floors: 3

Floor Height: 10.000

Inter Floor Height: 4.000

Inter Floor dB per Foot Loss: 8 Light:8, Medium:12, Heavy:16

Inter Floor dB Loss: 32.00

Floor Plan Configuration

AirMagnet Planner Project Folder: C:\Program Files (x86)\AirMagnet Inc\AirMagnet Surveyor\DemoProjects\PLANNER

Floor	Floor Name	Plan
3	Floor3	Plan3.spi
2	Floor2	Plan2.spi
1	Floor1	Plan1.spi

OK Cancel

- When ready press “OK” to import your Legacy Single Floor Planner project into the Multi-Floor Planner!

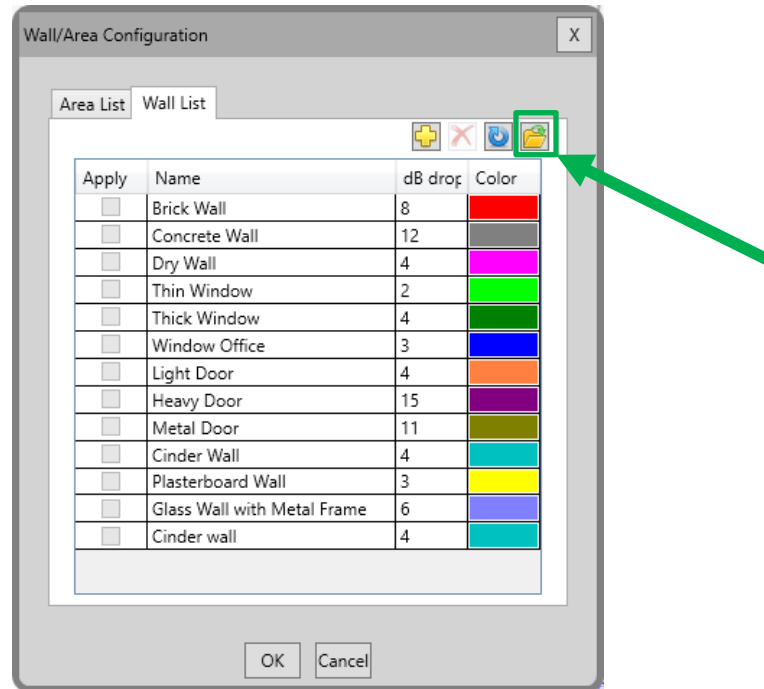
Please keep the following in mind while using this new functionality:

- The “Number of Floors” on the new Multi-Floor Planner project being created will be set to match the number of .spi files in the Legacy Single Floor Planner project automatically. You will be given the option to add or remove floors after the Multi-Floor Planner project has been created.
- You will have the option of importing the same .spi file into multiple floors. This is very useful when you are evaluating multiple design options (e.g., comparing different AP models) or when you have a building on which each floor uses the same floorplan.

Import Custom Building Materials from Legacy Planner into the Multi-Floor Planner

Starting on this release you will have the option of importing custom building materials or attenuation areas that were created using the Legacy Single Floor Planner into the Multi-Floor Planner. To do this:

- From the “Wall/Area Configuration” window select the “Import from AirMagnet Planner” option.



- When the import process has been completed, press the “OK” button.

New Antenna Patterns

This Planner 11.2.0 release adds the following antenna patterns.

Vendor	Antenna Pattern
AccelTex	ATS-OO-2456-466-10MPC-36 ATS-OP-2456-7-10MPC-36 ATS-OP-2456-8-10MPC-36 ATS-OP-2456-477-10MPC-36 ATS-OP-2456-81010-10MPC-36
Aerohive	AP130 AP1130
Arista	C-200 C-360
Aruba	AP-615
Cisco	Catalyst 9120AXI Catalyst 9136I
Meraki	MR57 MR78

Known Issues

This section documents the major known issues with this AirMagnet Planner 11.2.0 release.

Defect ID	Description
182216150	Floor plan calibration on the Multi-Floor Planner does not work as expected.
183925909	Export to CAD option on Multi-Floor Planner is missing APs when the region is set to Germany.

Release History

Release Month	Release Version
07/2020	AirMagnet Planner 10.0.0
12/2020	AirMagnet Planner 10.1.0
01/2021	AirMagnet Planner 10.2.0
05/2021	AirMagnet Planner 10.3.0
07/2021	AirMagnet Planner 10.3.1
11/2021	AirMagnet Planner 10.4.0
05/2022	AirMagnet Planner 10.5.0
11/2022	AirMagnet Planner 11.0.0
07/2023	AirMagnet Planner 11.1.0
11/2023	AirMagnet Planner 11.2.0

Technical Support

If you need help for this AirMagnet Planner 11.2.0 release, contact NetAlly, as follows:

Contact Venue	Description
Web:	https://www.netally.com/support/technical-support/
Phone:	1-844-878-2559 or 1-719-755-0770 and select Option 2

Note: International direct dial phone numbers are available at <https://www.netally.com/contact-us/>.