

AirMagnet Survey PRO 11.1.0

Release Notes

July 2023

Table of Contents

▪ Introduction	1
▪ Special Notes	1
▪ New Features in v11.1.0.....	3
▪ Bug Fixes	8
▪ Known Issues	8
▪ System Requirements	9
▪ Supported Site Map Image Formats.....	9
▪ Guideline for Use of Wi-Fi Adapters	10
▪ Limitations of Other Network Adapters.....	10
▪ Release History.....	11
▪ Technical Support	11

Introduction

AirMagnet Survey PRO is a powerful, easy-to-use WLAN site survey tool that empowers WLAN professionals with everything they need to plan and survey any 802.11 a/b/g/n/ac/ax wireless network on the 2.4GHz, 5GHz, and 6GHz bands.

This *Release Notes* highlight issues addressed in the 11.1.0 release in addition to the new features. It also provides basic instructions and important notes regarding the installation and operation of the software.

Special Notes

- You must uninstall any previous version of AirMagnet Survey using the Control Panel before installing the released version of Survey PRO/Planner 11.1.0. Do not use the 'Repair' function. Using Repair has resulted in unreliable performance in some versions of Windows.
- Note when installing on Windows 10 or 11, it is highly recommended to install all available Microsoft updates before installing and running AirMagnet Survey.
- When using any of the USB wireless adapters, you may need to re-create the wireless profiles when plugging the same adapter into a different USB port. This is because wireless profiles are stored based on the port, not the adapter itself.
- You must have a Cisco "Plus" license to use the Cisco Prime Infrastructure feature.

- To use preferred 802.11ac USB adapters with this AirMagnet Survey PRO 11.1.0 release, you must have the following versions of the Microsoft Windows operating system:
 - ✓ Microsoft Windows 10 Pro/Enterprise 64-bit
 - ✓ Microsoft Windows 11 Pro/Enterprise 64-bit
- When performing AP-on-a-stick active surveys with an 802.11ac/ax adapter, NetAlly recommends the following configuration scenarios:

Scenario	AP Configuration	Gateway Configuration	Adapter Configuration
1	DHCP server	Yes (using AP's IP address)	DHCP
2	DHCP server	No, not configured	DHCP
3	Not configured as DHCP server; static IP address assigned to AP	No, not configured	Static IP Address (within AP's IP address range)

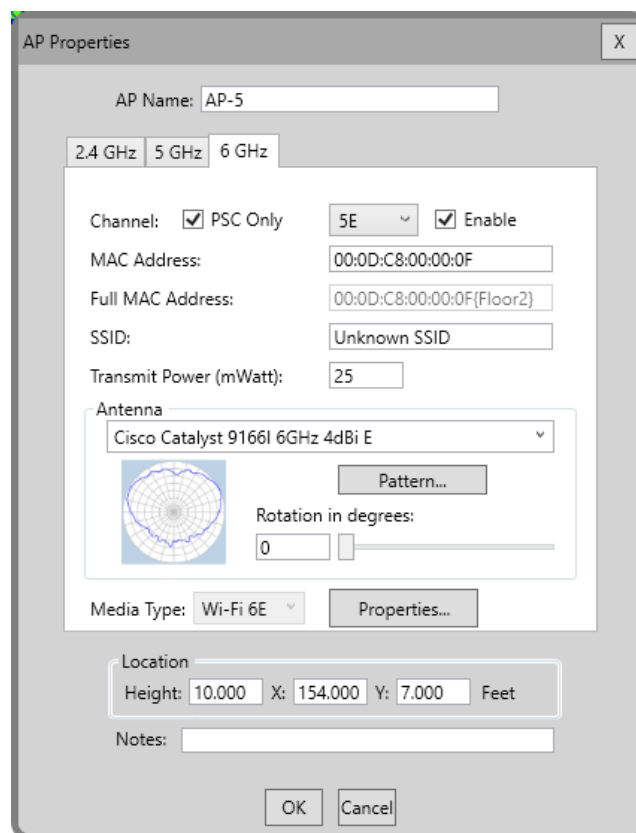
New Features in v11.1.0

- Wi-Fi 6E Support in the Multi-Floor Planner3
- Wi-Fi 6E Support in the Multi-Floor Planner Advisor4
- Wi-Fi 6E Support in the Multi-Floor Planner Antenna Manager5
- Re-Activation of the Legacy Single Floor Planner6
- End of Support for the Microsoft Windows 8.1 Operating System6
- New Antenna Patterns6

Wi-Fi 6E Support in the Multi-Floor Planner

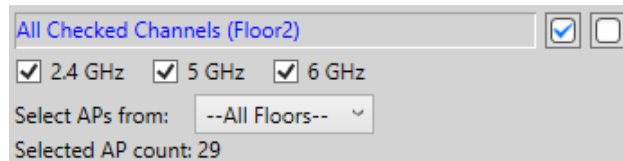
You will now be able to plan and design Wi-Fi 6E networks using AirMagnet Survey PRO! This release introduces the ability to generate Wi-Fi 6 predictive surveys on the 2.4/5/6 GHz bands while using the Multi-Floor Planner. Some of the new functionality now available includes:

- Option to select the 6GHz band while configuring AP properties.
- Option to select any of the 59 channels available in 6GHz band while configuring AP properties (including 20/40/80/160 MHz channels widths).
- Option to display or select PSC channels only.
- Option to select from a variety of Antenna Patterns that support the 6GHz band.



- Option to select 6GHz antenna patterns while using the AP List option to perform a Group Change.

- Support for the 6GHz band and tri-band APs in the reports.
- Updated default report descriptions that reflect the availability of tri-band support.
- Option to filter heatmaps or reports by the 2.4GHz, 5GHz, or 6GHz bands.



Please keep the following in mind while using this new functionality:

- An 'E' suffix has been added next to the channels on the 6GHz band to make it easier to differentiate them from those in 2.4GHz and 5GHz bands.
- The number of 6GHz channels available will not change based on country setting. Please make sure to only use channels that have been approved for use in your country.
- To differentiate between APs supporting dual band Wi-Fi 6 and those supporting tri-band (Wi-Fi 6E) an 'E' suffix has been added next to the Wi-Fi 6 icon.



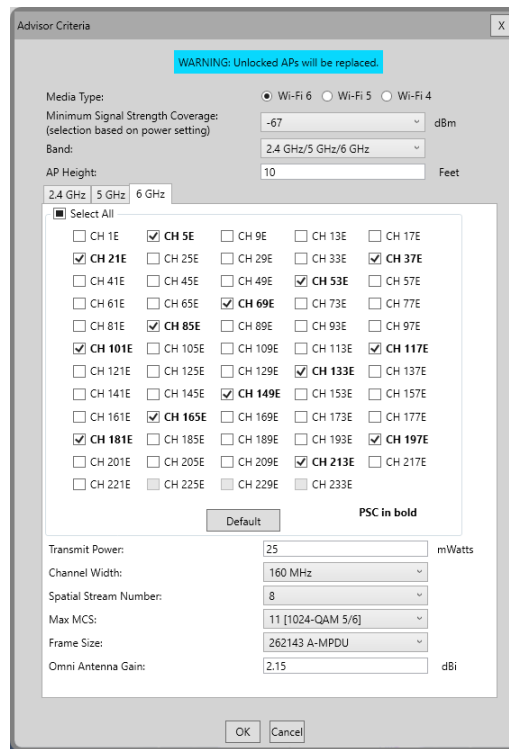
- For existing Multi-Floor Planner projects created with a previous version of the software the 6GHz radio will be disabled by default but can be enabled when needed.
- For existing Multi-Floor Planner projects created with a previous version of the software the MAC address of the 6GHz radio will be set to be the same as that of the 5GHz radio. This is done to prevent conflicts with other APs in the project but can be changed manually.

Wi-Fi 6E Support in the Multi-Floor Planner Advisor

Need some help deciding where to install those new Wi-Fi 6E APs? We have you covered! The Multi-Floor Planner Advisor tool now includes support for tri-band APs. Some of the new functionality now available includes:

- When selecting Wi-Fi 6 as the Media Type you will be given the option to select from the following Band combinations:
 - 2.4GHz
 - 5GHz
 - 6GHz
 - 2.4GHz/5GHz
 - 2.4GHz/6GHz
 - 5 GHz/6GHz
 - 2.4GHz/5GHz/6GHz

- When selecting to use the 6GHz band you will be given the option to select any of the 59 channels available (including 20/40/80/160 MHz channels widths).

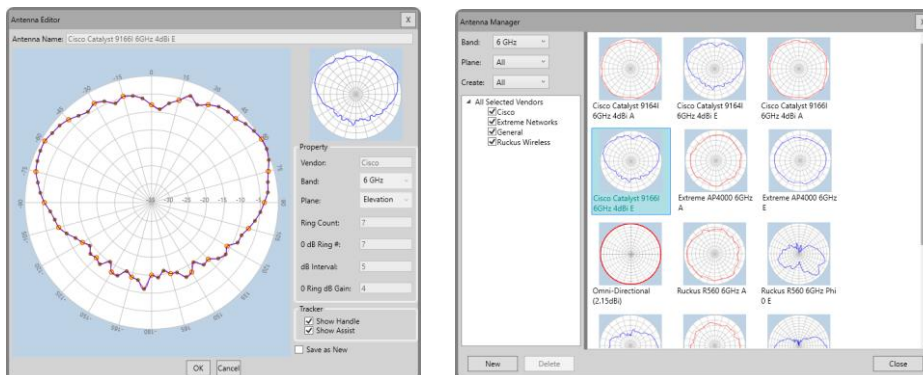


Please keep the following in mind while using this new functionality:

- By default, the Multi-Floor Advisor will use the PSC channels only.

Wi-Fi 6E Support in the Multi-Floor Planner Antenna Manager

You will now have the option to select from multiple 6GHz band antenna patterns from different vendors. Not only that, but you will also be able to create your own 6GHz patterns! Or you could use our [Antenna Patterns on Demand](#) service to download the latest ones as soon as they become available.

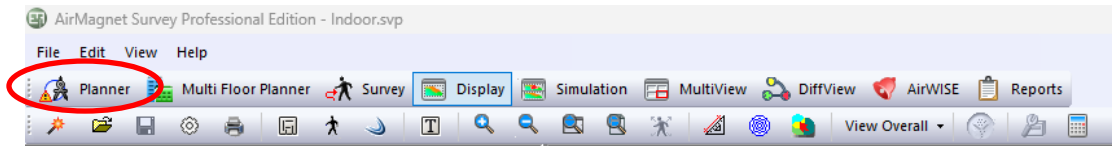


Note: Please refer to the New Antenna Patterns section of this document for a full list of Antenna Patterns included with this release.

Re-Activation of the Legacy Single Floor Planner

Because of popular demand and to make it easier for those of you that need more time to migrate to the Multi-Floor Planner, we have made it easier to re-activate the Legacy Single Floor Planner. To re-activate it do the following:

- Go to the AirMagnet Survey PRO tool bar and select the Planner option.



- When asked if you want to use the Legacy Single Floor Planner select the “Yes, I still want to use the Legacy Single Floor Planner, even if it is no longer supported.” option.

Note: Software updates and bug fixes are no longer being implemented for the Legacy Single Floor Planner feature. AllyCare support is limited to current product functionality. Making the above selection has no impact on other AirMagnet Survey PRO functionality.

End of Support for the Microsoft Windows 8.1 Operating System

After 10 years, Microsoft decided to end support for the Windows 8.1 operating system on January 10, 2023. As such, Windows 8.1 PC's will stop receiving both software and security updates. While you can continue to use your PC running Windows 8.1, without continued software and security updates, it will be at greater risk for viruses and malware. To ensure the security of your data, NetAlly has ended support for the Windows 8.1 operating system. Going forward, the best way for you to stay secure is to upgrade to a newer version of Windows, for the best performance NetAlly recommends the use of Windows 11.

New Antenna Patterns

This Survey PRO 11.1.0 release adds the following antenna patterns.

Vendor	Antenna Pattern
AccelTex	ATS-ID90RD-245-46-1RPSP-IC-W
	ATS-OHDP-245-1312-6NJ-IC
	ATS-OHDP-245-4-4RPSP-36
	ATS-OHDP-245-42-6RPSP-36
	ATS-OP-245-13-6RPSP-36
	ATS-OP-245-7-6RPSP-36
	ATS-OP-245-7D-4RPSP-36
	ATS-OP-245-7D-6RPSP-36
	ATS-OP-245-8-4RPSP-36
	ATS-OP-245-8-6RPSP-36
	ATS-OP-245-810-4RPSP-36-V2
	ATS-OP-245-810-6RPSP-36-V2
	ATS-OP-2456-13-8RPSP-36
	ATS-OP-2456-477-8RPSP-36

	ATS-OP-2456-6-8RPSP-36 ATS-OP-2456-7-8RPSP-36 ATS-OP-2456-81010-8RPSP-36
Allied Telesis	TQ6602 TQ6702
Cambium	XV2-21X XV2-22H XV2-23T
Cisco	Catalyst 9164I Catalyst 9166I Catalyst 9162I
Edgecore	EAP101 EAP102 EAP104
Extreme	AP4000 ML-2452-SEC6M4-N36 ML-2452-SEC6M4-N36
Ruckus	R350 R560 R610 R760
Ruijie	RG-RAP2200(E)
Ubiquiti	U6 Lite U6 Pro UAP-BeaconHD UAP-FlexHD UAP-nanoHD UDM
WatchGuard	AP130 AP330 AP332CR AP430CR AP432

Bug Fixes

This section covers the defects that have been fixed in this release.

Defect ID	Description
183776432	Old media types still used in Multi-Floor Planner.
183754090	Ubiquiti 2.4Ghz antenna patterns are missing.
183859878	Broken links in the user guide.
184813244	Antenna pattern editor 'Band' selection is blank.
184880377	Surveyor.exe file properties show product version 9.0.
184845126	Incorrect 0 ring dB gain in Extreme ML-2452-SEC6M4-N36 2.4 and 5GHz patterns.
185394560	Channel interference heatmap shows interference when none is expected.
185103825	Aruba AP-510 patterns are incorrect.
184039073	Cisco AIR-ANT2544V4M-R and Cisco AIR-ANT2568VG-N patterns, need to verify correct 0dB ring value.

Known Issues

This section documents the major known issues with this AirMagnet Survey 11.1.0 release.

Defect ID	Description
184880471	Print preview in option in Multi-Floor Planner is broken.
178103361	Survey Report: Deleted section is still included in the body of the report.
182968271	A change in Region/Language causes the floor plan to shift.
183582600	Passive Survey report page for 30 Top APs is missing strongest BSSIDs in all 3 bands.
181290737	View Per AP: AP Properties Color setting is not saved.
181904334	Incorrect AP Power is shown in AP List section of reports.
182224824	Legend does not match the color of the heatmap in some reports.

System Requirements

Laptop/Notebook PC/Tablet PC

- Operating Systems: Microsoft Windows 10 Pro/Enterprise 64-bit, or Microsoft Windows 11 Pro/Enterprise 64-bit.
- Intel® Core™ i5 2.00 GHz (Intel® Core™ i7 or higher recommended).
- 4 GB memory (8 GB or higher recommended).
- 800 MB free HDD or SSD space.
- AirMagnet-supported wireless network adapter(s).
- USB port for external adapter use.
- When using multiple adapters, NetAlly recommends the use of its multi-adapter kit. Otherwise, multiple USB ports in the PC are required.
- Google Earth must be installed to export the GPS data for outdoor surveys to Google Earth (Survey PRO only).

Apple® MacBook® Pro

- Operating Systems: MAC OS X v10.9 or higher running a supported Windows OS (as noted under the Laptop/Notebook PC/Tablet PC section) using Boot Camp®.
- Intel® Core™ i5 2.00 GHz (Intel® Core™ i7 or higher recommended).
- 4 GB memory (8 GB or higher recommended).
- 800 MB free HDD or SSD space.
- USB port for external adapter use.
- AirMagnet-supported wireless network adapter(s).
- When using multiple adapters, NetAlly recommends the use of its multi-adapter kit. Otherwise, multiple USB ports in the MacBook® Pro are required.
- Google Earth must be installed to export the GPS data for outdoor surveys to Google Earth (Survey PRO only).

Supported Site Map Image Formats

.bmp, .dib, .dwf, .dwg, .dxf, .emf, .gif, .vsd, .jpg, .wmf, .vdx, and .png.

Guideline for Use of Wi-Fi Adapters

AirMagnet Survey PRO provides the option to use a Wi-Fi adapter installed on the same computer running the application to capture Wi-Fi data.

AirMagnet mobile products categorize Wi-Fi adapters into the following types:

- **Preferred Adapters:** These adapters have been tested by NetAlly and are recommended for use with AirMagnet products. Drivers have been customized for extended feature support. For a complete, up-to-date listing of AirMagnet Preferred wireless adapters, visit <https://www.netally.com/products/airmagnet-survey-pro/>.
- **Other Adapters:** These adapters can be used with AirMagnet Survey PRO but have not been tested by NetAlly. Drivers have not been customized, will provide limited features, and could provide inaccurate data.

Note: When installing Intel® and USB adapters, it is important that you uncheck the option to install the adapter's client utility in addition to the driver software.

Limitations of Other Network Adapters

Any 802.11 adapter supported by Windows other than the Preferred Adapters falls into the "Other" network adapters category. They can be used with AirMagnet Survey PRO to perform a survey but have not been tested by NetAlly. These adapters' drivers have not been customized, provide limited feature support, and could provide inaccurate information. **It is important to note that NetAlly is not responsible for the quality of the test results collected using these adapters.**

The following are noted limitations of generic adapters in AirMagnet Survey.

- No ability to scan specific channels: all channels are scanned. There is no Scan or 802.11 tab under the **File>Configure** menu.
- No noise or signal-to-noise ratio (SNR) measurements.
- Measured PHY data rates in the uplink and downlink directions are not separated. Only a single PHY data rate for the connection is reported.
- No packet retries and loss measurements on active and iPerf surveys.
- iPerf throughput performance may vary, depending on the model of the generic adapter in use.
- Limitations in the wireless channels that they scan: They may only be able to scan channels that are approved for wireless use in a specific country, and unable to scan channels assigned as Dynamic Frequency Selection (DFS) or requiring Automated Frequency Coordination (AFC).
- Only one non-preferred adapter can be used when utilizing multiple adapters. Refer to "Utilizing Multiple Adapters" in the *AirMagnet Survey User Guide*.
- There is no roaming control for active and iPerf surveys.
- Due to the inability to disable roaming on the adapter, only the "by SSID" (not by AP) method is available for active and iPerf surveys.

Release History

Release Month	Release Version
07/2020	AirMagnet Survey PRO 10.0.0
12/2020	AirMagnet Survey PRO 10.1.0
01/2021	AirMagnet Survey PRO 10.2.0
05/2021	AirMagnet Survey PRO 10.3.0
07/2021	AirMagnet Survey PRO 10.3.1
11/2021	AirMagnet Survey PRO 10.4.0
05/2022	AirMagnet Survey PRO 10.5.0
11/2022	AirMagnet Survey PRO 11.0.0
07/2023	AirMagnet Survey PRO 11.1.0

Technical Support

If you need help with this AirMagnet Survey PRO 11.1.0 release, contact NetAlly, as follows:

Contact Venue	Description
Web:	https://www.netally.com/support/technical-support/
Phone:	1-844-878-2559 or 1-719-755-0770 and select Option 2

Note: International direct dial phone numbers are available at <https://www.netally.com/contact-us/>.