

AirMagnet Survey PRO 11.2.0

Release Notes

November 2023

Introduction

AirMagnet Survey PRO is a powerful, easy-to-use WLAN site survey tool that empowers WLAN professionals with everything they need to plan and survey any 802.11 a/b/g/n/ac/ax wireless network on the 2.4GHz, 5GHz, and 6GHz bands.

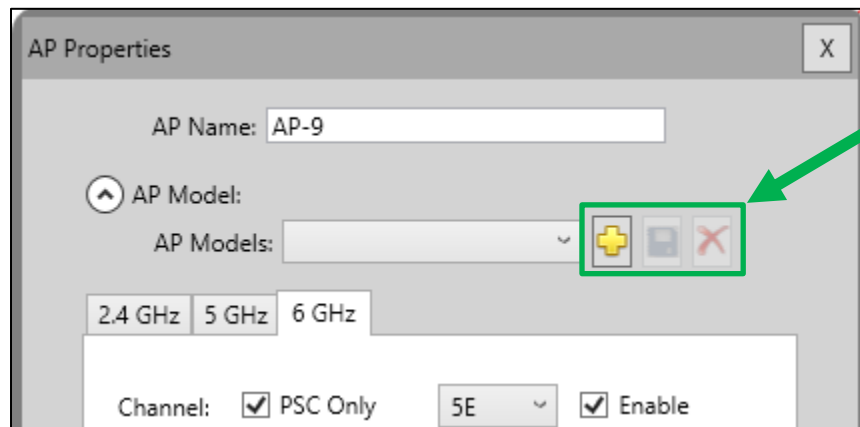
This *Release Notes* highlight issues addressed in the 11.2.0 release in addition to the new features.

New Features in v11.2.0

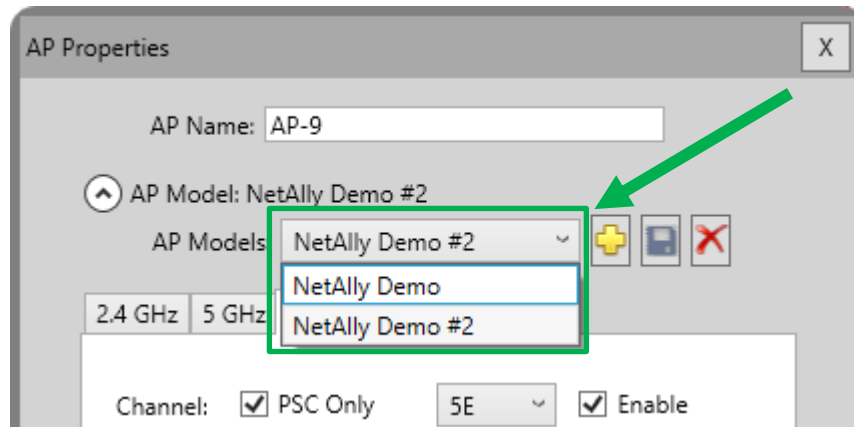
AP Model Templates in the Multi-Floor Planner

You will now be able to create AP model templates while designing or planning a Wi-Fi network in the Multi-Floor Planner! AP model templates allow you to save your preferred AP configuration and reuse it on other projects, thus making it faster to plan or design a network. Some of the new functionality now available includes:

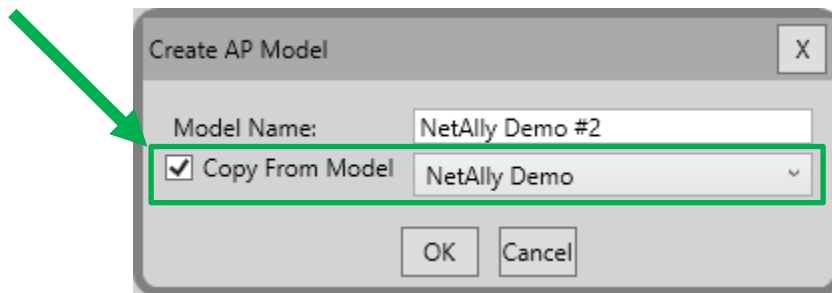
- Option to create, modify, or delete AP model templates from the “AP Properties” window.



- Option to select an existing AP model template and reuse it from the “AP Properties” window.



- Option to use an existing AP model template as a base to create new templates.



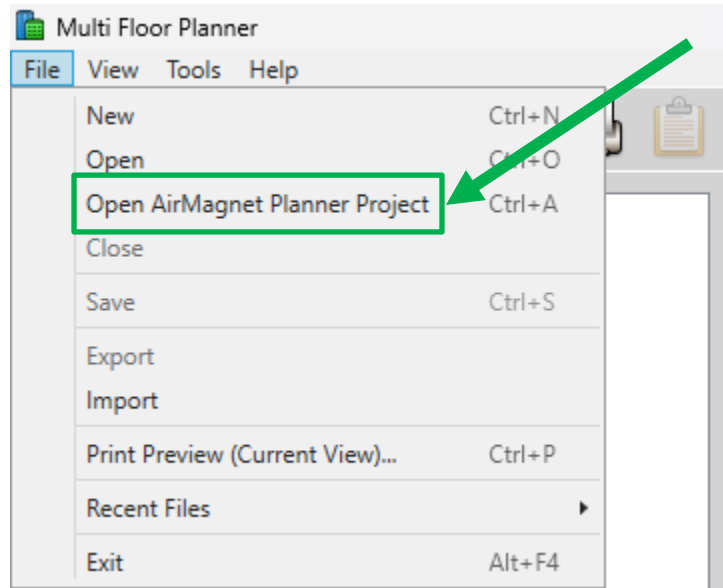
Please keep the following in mind while using this new functionality:

- The option to import AP model templates created with the Legacy Single Floor Planner into the Multi-Floor Planner is not currently available.

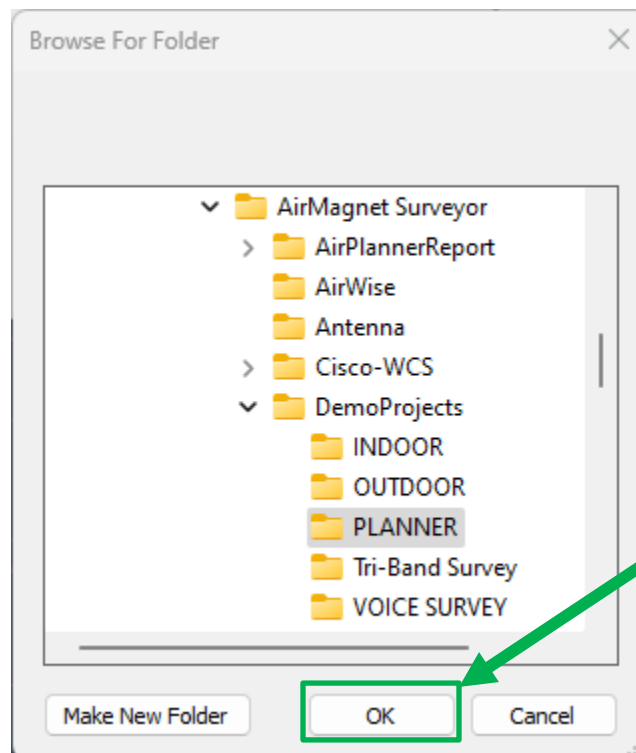
Automated Import of Legacy Planner Projects in the Multi-Floor Planner

Importing existing Legacy Single Floor Planner projects into the Multi-Floor Planner is now a lot easier than before. Instead of having to create a new Multi-Floor Planner project and then manually import a Legacy Single Floor Planner project into a floor, you will now have the option of automatically converting Legacy Single Floor Planner projects into a Multi-Floor Planner project. Here is how it works!

- From the Multi-Floor Planner, select the "File" option and then select the "Open AirMagnet Planner Project" option.



- Browse to the folder that contains the Legacy Single Floor Planner project you want to import and click on the "OK" button.



- While on the “New Building” window, enter the “Building Name” and other required information.
- If you have multiple Legacy Single Floor Planner files (.spi) under the same project, select to which floor you want to assign each file.

The screenshot shows the 'New Building' dialog box with the following fields and values:

- Building Name: NetAlly Demo
- Building Folder: C:\Users\JulioPetrovitch\Documents\NetAlly Demo
- Building Contact: NetAlly
- Unit of Measurement: Feet
- Number of Floors: 3
- Floor Height: 10.000
- Inter Floor Height: 4.000
- Inter Floor dB per Foot Loss: 8 (Light:8, Medium:12, Heavy:16)
- Inter Floor dB Loss: 32.00

The 'Floor Plan Configuration' section is highlighted with a green box and contains the following table:

Floor	Floor Name	Plan
3	Floor3	Plan3.spi
2	Floor2	Plan2.spi
1	Floor1	Plan1.spi

At the bottom of the dialog are 'OK' and 'Cancel' buttons. A green arrow points to the 'Plan' column of the table.

- When ready press “OK” to import your Legacy Single Floor Planner project into the Multi-Floor Planner!

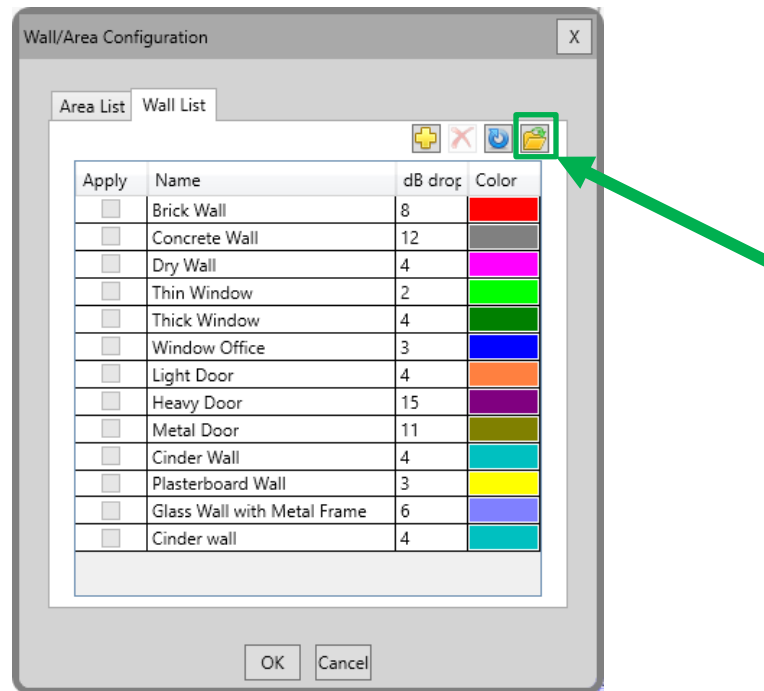
Please keep the following in mind while using this new functionality:

- The “Number of Floors” on the new Multi-Floor Planner project being created will be set to match the number of .spi files in the Legacy Single Floor Planner project automatically. You will be given the option to add or remove floors after the Multi-Floor Planner project has been created.
- You will have the option of importing the same .spi file into multiple floors. This is very useful when you are evaluating multiple design options (e.g., comparing different AP models) or when you have a building on which each floor uses the same floorplan.

Import Custom Building Materials from Legacy Planner into the Multi-Floor Planner

Starting on this release you will have the option of importing custom building materials or attenuation areas that were created using the Legacy Single Floor Planner into the Multi-Floor Planner. To do this:




- From the "Wall/Area Configuration" window select the "Import from AirMagnet Planner" option.



- When the import process has been completed, press the "OK" button.

Per Channel and SSID Report Improvements

To make it easier to identify areas covered by each AP on the "Per Channel Report" and "Per SSID Report", the AP color is now shown on the "Access Points Information" list.

1 Per Channel Report						
1.1 Access Points Information						
AP Name	Media Type	MAC Address	Channel	SSID	Power,mW	Max Signal
 Non ACL, Neighbors, Rogues						
 Cisco-B2:D1:7E	Wi-Fi 4-5GHz	50:17:FF:B2:D1:7E	CH (36,1)	CorpNet11ac	100	-36
 Cisco-24:A4:AE	Wi-Fi 5-5GHz	34:DB:FD:24:A4:AE	CH (36 P, 40MHz, 36-40)	CorpNet11ac	100	-42

New Antenna Patterns

This Survey PRO 11.2.0 release adds the following antenna patterns.

Vendor	Antenna Pattern
AccelTex	ATS-OO-2456-466-10MPC-36 ATS-OP-2456-7-10MPC-36 ATS-OP-2456-8-10MPC-36 ATS-OP-2456-477-10MPC-36 ATS-OP-2456-81010-10MPC-36
Aerohive	AP130 AP1130
Arista	C-200 C-360
Aruba	AP-615
Cisco	Catalyst 9120AXI Catalyst 9136I
Meraki	MR57 MR78

Bug Fixes

This section covers the defects that have been fixed in this release.

Defect ID	Description
179303985	Incorrect channel width displayed for 802.11ax APs on the 2.4GHz band.
185371971	Max signal strength heatmap is incorrect in some cases.
185808695	When importing AirMapper surveys the placed AP icon is missing after creating a filtered data file.

Known Issues

This section documents the major known issues with this AirMagnet Survey 11.2.0 release.

Defect ID	Description
178103361	Survey Report: Deleted section is still included in the body of the report.
182968271	A change in Region/Language causes the floor plan to shift.
183582600	Passive Survey report page for 30 Top APs is missing strongest BSSIDs in all 3 bands.
181290737	View Per AP: AP Properties Color setting is not saved.
181904334	Incorrect AP Power is shown in AP List section of reports.

Release History

Release Month	Release Version
07/2020	AirMagnet Survey PRO 10.0.0
12/2020	AirMagnet Survey PRO 10.1.0
01/2021	AirMagnet Survey PRO 10.2.0
05/2021	AirMagnet Survey PRO 10.3.0
07/2021	AirMagnet Survey PRO 10.3.1
11/2021	AirMagnet Survey PRO 10.4.0
05/2022	AirMagnet Survey PRO 10.5.0
11/2022	AirMagnet Survey PRO 11.0.0
07/2023	AirMagnet Survey PRO 11.1.0
11/2023	AirMagnet Survey PRO 11.2.0

Technical Support

If you need help with this AirMagnet Survey PRO 11.2.0 release, contact NetAlly, as follows:

Contact Venue	Description
Web:	https://www.netally.com/support/technical-support/
Phone:	1-844-878-2559 or 1-719-755-0770 and select Option 2

Note: International direct dial phone numbers are available at <https://www.netally.com/contact-us/>.