

AirMagnet Survey PRO 11.4.0

Release Notes

October 2024

Introduction

AirMagnet Survey PRO is a powerful, easy-to-use WLAN site survey tool that empowers WLAN professionals with everything they need to plan and survey any 802.11 a/b/g/n/ac/ax wireless network on the 2.4GHz, 5GHz, and 6GHz bands.

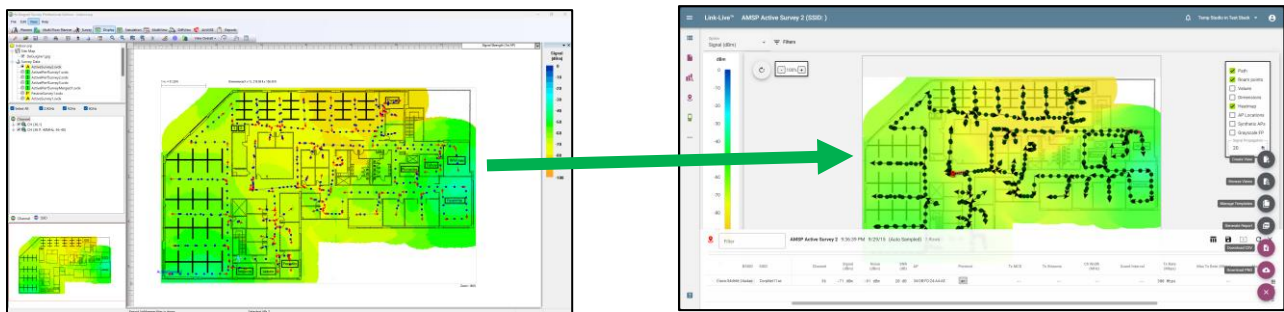
This *Release Notes* highlight issues addressed in the 11.4.0 release in addition to the new features.

New Features in v11.4.0

Upload AirMagnet Survey Projects to Link-Live

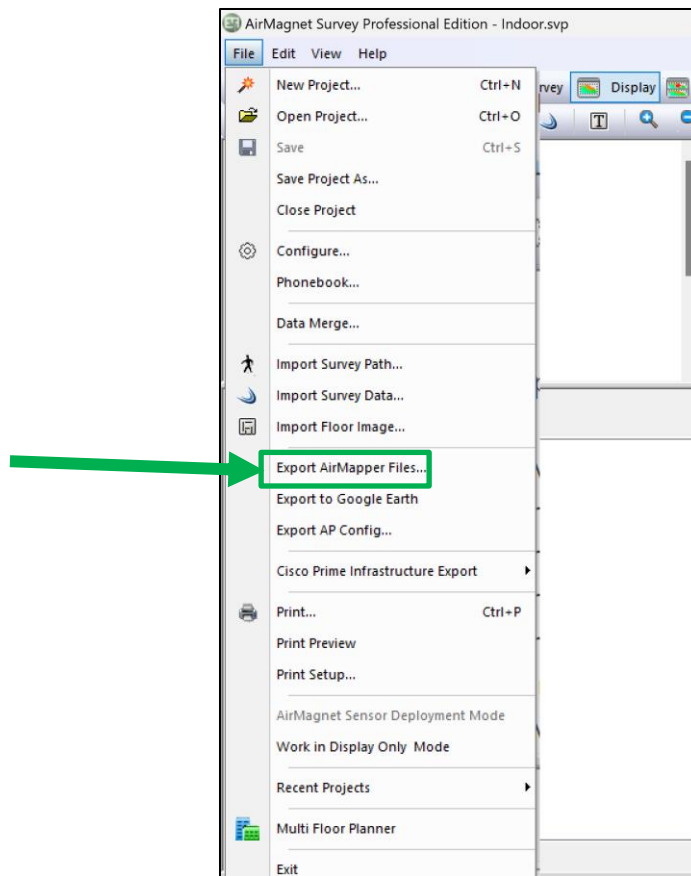
Sharing AirMagnet survey projects with customers and team members or having a single repository for all your surveys will now be easier than before! Starting with this release you will be able to export active or passive survey projects to Link-Live. This will allow you to:

- Analyze heatmaps in Link-Live.
- Highlight Roam Points.
- Use report templates saved in Link-Live to generate custom reports.

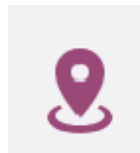


Here is how the process works:

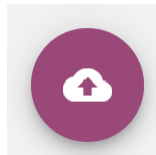
- Open the AirMagnet survey project you want to export to Link-Live.
- Select the **File** option and then click on the **Export AirMapper Files** option from the drop-down menu.



- Browse to the folder on which you want to save the exported project. The exported project will be saved as a .AMP (AirMapper) file.
- Login to Link-Live.
- Select the **AirMapper** option on the left side of the screen.



- Click or tap on the **Import an .amp File** option on the lower right of the screen.



- Enter a **Title** for the project and a **Label** (optional).
- Select the **Chose File** option and browse to the location of the .AMP file you want to import.
- Click or tap the **Upload** option.

Import an .amp file

Title*
Demo Active Survey

Labels

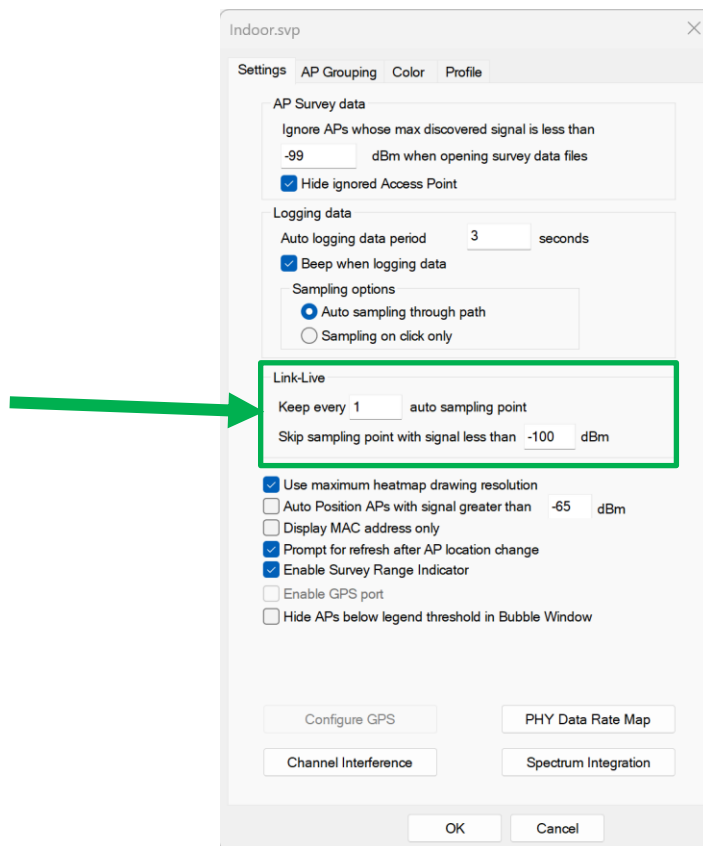
Choose File No file chosen

Cancel Upload

Your AirMagnet survey project will now show up on the list of AirMapper files on the left of the screen!

Please keep the following in mind when using this new functionality:

- This functionality is only available for AirMagnet **active** and **passive** surveys (including those on which a GPS was used), the following survey types are not supported.
 - iPerf surveys
 - VoFi surveys
 - Virtual surveys (Planner or Multi-Floor Planner)
- Spectrum data collected while performing an AirMagnet **active** or **passive** survey will not be included in the exported .AMP file.
- Before converting an AirMagnet project to the .AMP format you have the option of selecting how many data points will be included in the project. This option is used to reduce the number of auto sampling datapoints being exported to Link-Live and improve rendering time. To use this new option:
 - Open the AirMagnet survey project you want to export to Link-Live.
 - Go to **File** and select the **Configure** option.
 - Find the Link-Live section under the **Settings** tab.
 - Select how many data points will be included in the project by using the two options available:
 - **Keep every X auto sampling point** – Allows you to select how many data points to keep between points that were collected manually (saved when you click on the floor plan).
 - **Skip sampling point with signal strength less than Y dBm** – Allows you to exclude data points with a signal strength weaker than the provided value (in dBm).



- Please note the following limitations while exporting merged files to Link-Live:
 - If a merged file includes data for a survey type that is not supported, the non-supported data will not be included in the export. This could cause for the heatmaps in Link-Live to look different than those on AirMagnet Survey PRO.
 - When exporting a merged file for which the original data files are missing, only the merged file will be exported.
- After importing an AirMagnet survey to Link-Live the following **File Info** will be available:
 - Survey Type – Active or Passive
 - Start Time – Time and date on which the survey was started
 - Unit Serial – AirMagnet survey data file name
 - Number of Points – The number of data points imported
 - Floor Plan – Name of the floor plan image
 - AirMagnet Adapter – Model and MAC address of the adapter used to perform the survey (not available for merged AirMagnet surveys)
- The following analysis options will be available in Link-Live for imported AirMagnet surveys:
 - Wi-Fi Survey – Allows you to generate heatmaps and reports
 - Export – Download a copy of the .AMP file to your preferred device
- The following visualization options will be available in Link-Live for imported AirMagnet surveys:
 - Active Surveys

- Signal
- Noise (Available for adapters that support Noise measurements)
- SNR (Available for adapters that support Noise measurements)
- Tx Rate (Available when using custom AirMagnet drivers, Rx Rates not supported in Link-Live. Shows PHY Connections Rates when using Windows drivers.)
- Passive Surveys
 - Signal
 - Noise
 - SNR
 - Co-Channel Interference
 - Adjacent Channel Interference
 - AP Coverage
- The following customization options will be available in Link-Live for imported AirMagnet surveys:
 - Active
 - Path – Shows the path that was taken while collecting the survey data
 - Roam Points – Highlights roaming events on the floor plan
 - Values – Shows the strongest value measured for the selected visualization
 - Dimensions – Shows the floor plan dimensions
 - Heatmap – Show or hide the heatmap
 - Grayscale FP – Change colored floor plans to black and white
 - Passive
 - Path - Shows the path that was taken while collecting the survey data
 - Values - Shows the strongest value measured for the selected visualization
 - Dimensions - Shows the floor plan dimensions
 - Heatmap - Show or hide the heatmap
 - AP Locations – Shows the location of APs in the floor plan
 - Grayscale FP - Change colored floor plans to black and white
- The following report options will be available in Link-Live for imported AirMagnet surveys:
 - Create View – Allows you to create custom report views
 - Browse Views – Allows you to browse, select, and load custom report views
 - Manage Templates – Allows you to create report templates that can be reused in other projects
 - Generate Report – Generate a PDF report
 - Download CSV – Download the raw survey data on a .CSV format

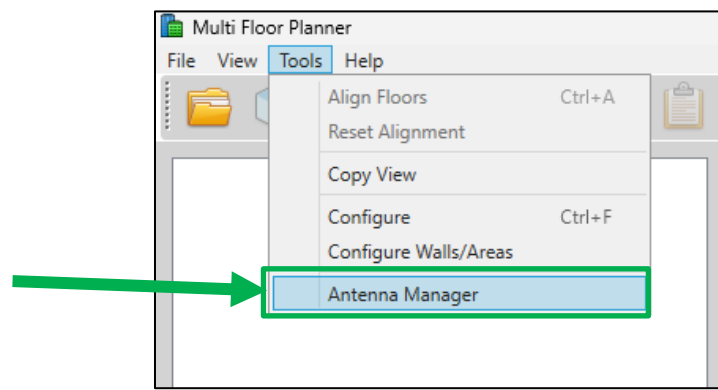
- Download PNG – Download a screenshot of the floor plan and heatmap on a .PNG format

Antenna Pattern Load Time Improvements in the Multi-Floor Planner

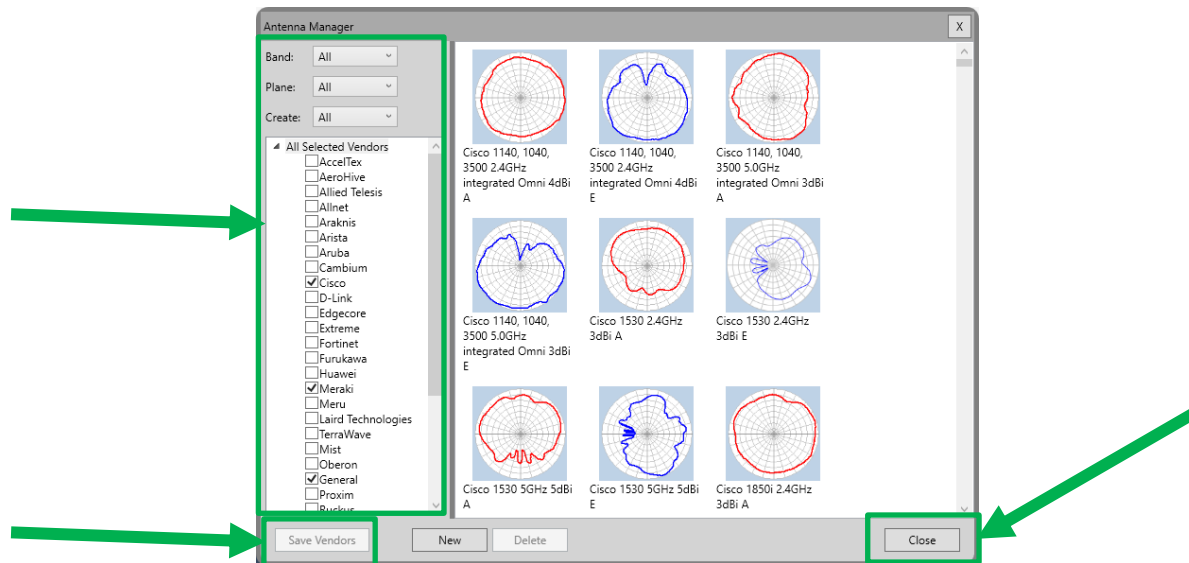
On this release we have improved antenna pattern load times by allowing you to select which AP vendor antenna patterns to use. No more waiting for thousands of antenna patterns to load!

To select which AP vendor antenna patterns to use do as follows:

- Launch the Multi-Floor Planner module.
Note: The following steps must be completed before opening a project.
- Select the **Tools** option on the upper left of the screen.
- Select the **Antenna Manager** option on the drop-down list.



- Use the filtering options on the left side of the **Antenna Manager** window to select the AP vendors you want the **Antenna Manager** to load by default.
- Click or tap on the **Save Vendors** option.
- Close the **Antenna Manager**.



That's it! From now on every time you open the Antenna Manager, only antenna patterns for the selected vendors will be loaded. Meanwhile, while configuring AP properties, only antenna patterns available for the selected vendors will be available.

Please keep the following in mind when using this new functionality:

- All Multi-Floor Planner projects must be closed for the **Save Vendors** option to become available on the Antenna Manager.
- Closing the Antenna Manager will not save the selected AP vendors. Don't forget to use the **Save Vendors** option!
- If you open a project that includes antenna patterns from a vendor that was not selected in the **Antenna Manager**, the missing vendor antenna patterns will be added to the list of selected vendors automatically.
- You can select different vendors for the 2.4 GHz, 5 GHz, or 6GHz bands, but at least one vendor must be selected per band.
- Depending on the vendors selected, the default antenna on the **AP Properties** screen could change.

New Antenna Patterns

This Survey PRO 11.4.0 release adds the following antenna patterns.

Vendor	Antenna Pattern
Cambium	ANT-D35-4X4-01
	ANT-D60-4X4-01
Edgecore	EAP111
	OAP101-6E
Ubiquiti	U7 Pro

Bug Fixes

This section covers the defects that have been fixed in this release.

Defect ID	Description
187499366	Some links in the user guide are broken.
187555729	Simulation 'New AP Properties' popup dialog shows channel drop-list with invalid channels

Known Issues

This section documents the major known issues with this AirMagnet Survey 11.4.0 release.

Defect ID	Description
186987523	Application stops responding when trying to perform an active survey to an AP on Channel 165 (Intel AX201 adapter).
187192641	PHY data rates are frozen during an Active survey while using the Emwicon WMI7211.
178103361	Survey Report: Deleted section is still included in the body of the report.
183582600	Passive Survey report page for 30 Top APs is missing strongest BSSIDs in all 3 bands.
181290737	View Per AP: AP Properties Color setting is not saved.
181904334	Incorrect AP Power is shown in AP List section of reports.
187269916	Incorrect channel displayed (doesn't match channel in tree view).

Release History

Release Month	Release Version
07/2020	AirMagnet Survey PRO 10.0.0
12/2020	AirMagnet Survey PRO 10.1.0
01/2021	AirMagnet Survey PRO 10.2.0
05/2021	AirMagnet Survey PRO 10.3.0
07/2021	AirMagnet Survey PRO 10.3.1
11/2021	AirMagnet Survey PRO 10.4.0
05/2022	AirMagnet Survey PRO 10.5.0
11/2022	AirMagnet Survey PRO 11.0.0
07/2023	AirMagnet Survey PRO 11.1.0
11/2023	AirMagnet Survey PRO 11.2.0
04/2024	AirMagnet Survey PRO 11.3.0
10/2024	AirMagnet Survey PRO 11.4.0

Technical Support

If you need help with this AirMagnet Survey PRO 11.4.0 release, contact NetAlly, as follows:

Contact Venue	Description
Web:	https://www.netally.com/support/technical-support/
Phone:	1-844-878-2559 or 1-719-755-0770 and select Option 2

Note: International direct dial phone numbers are available at <https://www.netally.com/contact-us/>.